

# CHCHD3 Rabbit pAb

Catalog No.: A8584

2 Publications

## Basic Information

### Observed MW

30kDa

### Calculated MW

26kDa

### Category

Primary antibody

### Applications

WB, IF/ICC, IP, ELISA

### Cross-Reactivity

Human, Mouse, Rat

## Background

The protein encoded by this gene is an inner mitochondrial membrane scaffold protein. Absence of the encoded protein affects the structural integrity of mitochondrial cristae and leads to reductions in ATP production, cell growth, and oxygen consumption. This protein is part of the mitochondrial contact site and cristae organizing system (MICOS). Several transcript variants encoding different isoforms have been found for this gene.

## Recommended Dilutions

**WB** 1:500 - 1:2000

**IF/ICC** 1:50 - 1:200

**IP** 0.5µg-4µg antibody for  
400µg-600µg extracts of  
whole cells

**ELISA** Recommended starting  
concentration is 1 µg/mL.  
Please optimize the  
concentration based on  
your specific assay  
requirements.

## Immunogen Information

### Gene ID

54927

### Swiss Prot

Q9NX63

### Immunogen

Recombinant protein (or fragment). This information is considered to be commercially sensitive.

### Synonyms

Mic19; MINOS3; MICOS19; PPP1R22; CHCHD3

## Contact

☎ | 400-999-6126

✉ | [cn.market@abclonal.com.cn](mailto:cn.market@abclonal.com.cn)

🌐 | [www.abclonal.com.cn](http://www.abclonal.com.cn)

## Product Information

### Source

Rabbit

### Isotype

IgG

### Purification

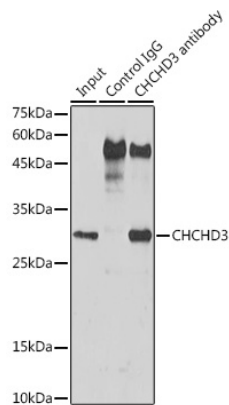
Affinity purification

### Storage

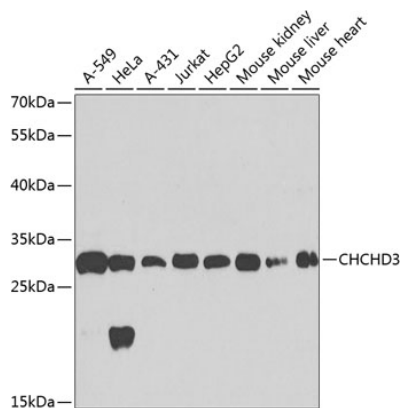
Store at -20°C. Avoid freeze / thaw cycles.

Buffer: PBS containing 50% glycerol, preserved with proclin300 or sodium azide (as specified on the Certificate of Analysis), pH 7.3.

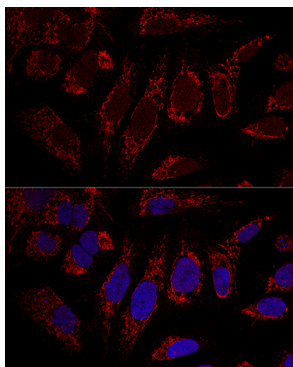
Validation Data



Immunoprecipitation analysis of 600 µg extracts of Mouse liver cells using 3 µg CHCHD3 antibody (A8584). Western blot was performed from the immunoprecipitate using CHCHD3 antibody (A8584) at a dilution of 1:1000.



Western blot analysis of various lysates using CHCHD3 Rabbit pAb (A8584) at 1:1000 dilution. Secondary antibody: HRP-conjugated Goat anti-Rabbit IgG (H+L) (AS014) at 1:10000 dilution. Lysates/proteins: 25µg per lane. Blocking buffer: 3% nonfat dry milk in TBST. Detection: ECL Basic Kit (RM00020). Exposure time: 40s.



Confocal immunofluorescence analysis of U2OS cells using CHCHD3 Rabbit pAb (A8584) at dilution of 1:100. Blue: DAPI for nuclear staining.