

TMPRSS11A Rabbit pAb

Catalog No.: A8605

Basic Information

Observed MW

48kDa

Calculated MW

47kDa

Category

Primary antibody

Applications

ELISA, WB

Cross-Reactivity

Human, Mouse, Rat

Background

Predicted to enable serine-type endopeptidase activity. Predicted to be involved in proteolysis. Predicted to be located in extracellular region. Predicted to be integral component of plasma membrane.

Recommended Dilutions

WB 1:500 - 1:2000

Immunogen Information

Gene ID

339967

Swiss Prot

Q6ZMR5

Immunogen

Recombinant fusion protein containing a sequence corresponding to amino acids 300-421 of human TMPRSS11A (NP_872412.3).

Synonyms

HESP; ECRG1; HATL1; TMPRSS11A

Contact

 | 400-999-6126

 | cn.market@abclonal.com.cn

 | www.abclonal.com.cn

Product Information

Source

Rabbit

Isotype

IgG

Purification

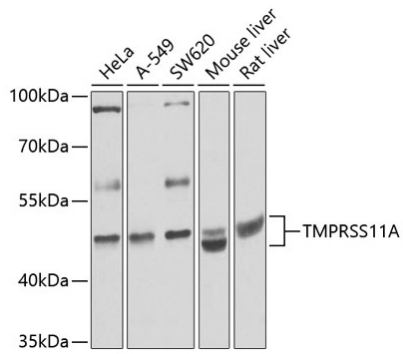
Affinity purification

Storage

Store at -20°C. Avoid freeze / thaw cycles.

Buffer: PBS with 0.02% sodium azide, 50% glycerol, pH 7.3.

Validation Data



Western blot analysis of extracts of various cell lines, using TMPRSS11A antibody (A8605) at 1:1000 dilution.

Secondary antibody: HRP Goat Anti-Rabbit IgG (H+L) (AS014) at 1:10000 dilution.

Lysates/proteins: 25µg per lane.

Blocking buffer: 3% nonfat dry milk in TBST.

Detection: ECL Basic Kit (RM00020).

Exposure time: 15s.