

# eIF2B epsilon (EIF2B5) Rabbit mAb

Catalog No.: A8670 **Recombinant**

## Basic Information

### Observed MW

80kDa

### Calculated MW

80kDa

### Category

Primary antibody

### Applications

ELISA, WB, IHC-P, IF/ICC

### Cross-Reactivity

Human, Mouse, Rat

### CloneNo number

ARC1774

## Background

This gene encodes one of five subunits of eukaryotic translation initiation factor 2B (EIF2B), a GTP exchange factor for eukaryotic initiation factor 2 and an essential regulator for protein synthesis. Mutations in this gene and the genes encoding other EIF2B subunits have been associated with leukoencephalopathy with vanishing white matter.

## Recommended Dilutions

<b>WB</b>	1:500 - 1:2000
<b>IHC-P</b>	1:50 - 1:200
<b>IF/ICC</b>	1:50 - 1:200

## Immunogen Information

### Gene ID

8893

### Swiss Prot

Q13144

### Immunogen

A synthetic peptide corresponding to a sequence within amino acids 1-100 of human eIF2B epsilon (EIF2B5) (EIF2B5) (Q13144).

### Synonyms

CLE; CACH; LVWM; EIF-2B; EIF2Bepsilon; eIF2B epsilon (EIF2B5)

## Contact

☎ | 400-999-6126

✉ | [cn.market@abclonal.com.cn](mailto:cn.market@abclonal.com.cn)

🌐 | [www.abclonal.com.cn](http://www.abclonal.com.cn)

## Product Information

### Source

Rabbit

### Isotype

IgG

### Purification

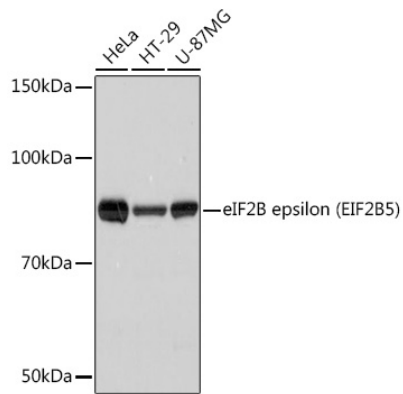
Affinity purification

### Storage

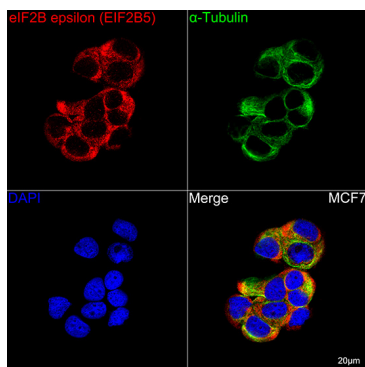
Store at -20°C. Avoid freeze / thaw cycles.

Buffer: PBS with 0.02% sodium azide, 0.05% BSA, 50% glycerol, pH7.3.

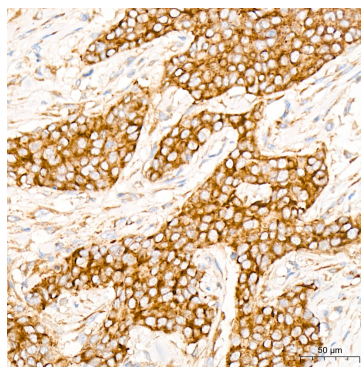
## Validation Data



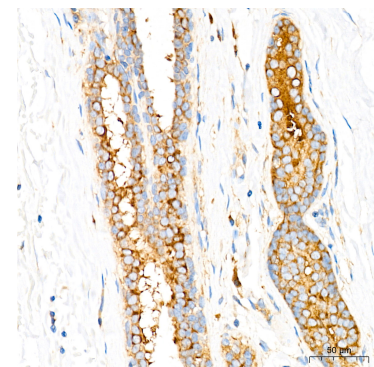
Western blot analysis of various lysates using eIF2B epsilon (EIF2B5) Rabbit mAb (A8670) at 1:1000 dilution.  
 Secondary antibody: HRP Goat Anti-Rabbit IgG (H+L) (AS014) at 1:10000 dilution.  
 Lysates/proteins: 25µg per lane.  
 Blocking buffer: 3% nonfat dry milk in TBST.  
 Detection: ECL Basic Kit (RM00020).  
 Exposure time: 3s.



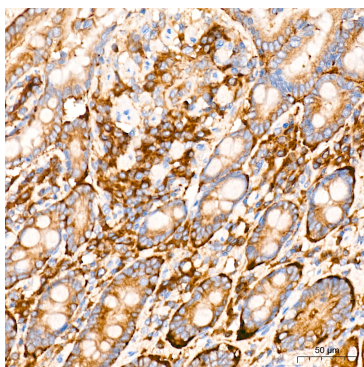
Confocal imaging of MCF7 cells using eIF2B epsilon (EIF2B5) Rabbit mAb (A8670, dilution 1:100) followed by a further incubation with Cy3 Goat Anti-Rabbit IgG (H+L) (AS007, dilution 1:500) (Red). The cells were counterstained with  $\alpha$ -Tubulin Mouse mAb (AC012, dilution 1:400) followed by incubation with ABflo® 488-conjugated Goat Anti-Mouse IgG (H+L) Ab (AS076, dilution 1:500) (Green). DAPI was used for nuclear staining (Blue). Objective: 100x.



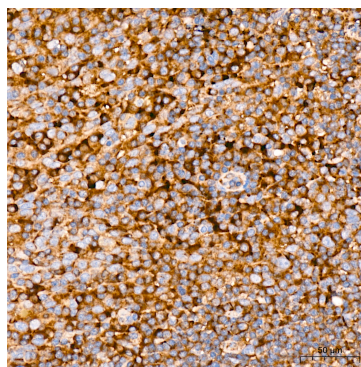
Immunohistochemistry analysis of eIF2B epsilon (EIF2B5) in paraffin-embedded human breast cancer tissue using eIF2B epsilon (EIF2B5) Rabbit mAb (A8670) at a dilution of 1:200 (40x lens). High pressure antigen retrieval was performed with 0.01 M citrate buffer (pH 6.0) prior to IHC staining.



Immunohistochemistry analysis of eIF2B epsilon (EIF2B5) in paraffin-embedded human breast tissue using eIF2B epsilon (EIF2B5) Rabbit mAb (A8670) at a dilution of 1:200 (40x lens). High pressure antigen retrieval was performed with 0.01 M citrate buffer (pH 6.0) prior to IHC staining.



Immunohistochemistry analysis of eIF2B epsilon (EIF2B5) in paraffin-embedded human colon tissue using eIF2B epsilon (EIF2B5) Rabbit mAb (A8670) at a dilution of 1:200 (40x lens). High pressure antigen retrieval was performed with 0.01 M citrate buffer (pH 6.0) prior to IHC staining.



Immunohistochemistry analysis of eIF2B epsilon (EIF2B5) in paraffin-embedded human tonsil tissue using eIF2B epsilon (EIF2B5) Rabbit mAb (A8670) at a dilution of 1:200 (40x lens). High pressure antigen retrieval was performed with 0.01 M citrate buffer (pH 6.0) prior to IHC staining.