

A-RAF Rabbit mAb

Catalog No.: A8687

Recombinant

1 Publications

Basic Information

Observed MW

68kDa

Calculated MW

68kDa

Category

Primary antibody

Applications

ELISA, WB, IHC-P

Cross-Reactivity

Human

CloneNo number

ARC1782

Background

Enables protein serine/threonine kinase activity. Involved in negative regulation of apoptotic process; regulation of TOR signaling; and regulation of cellular protein metabolic process. Predicted to be active in cytosol and mitochondrion. Biomarker of high grade glioma.

Recommended Dilutions

WB 1:500 - 1:1000

IHC-P 1:50 - 1:200

Immunogen Information

Gene ID

369

Swiss Prot

P10398

Immunogen

Recombinant fusion protein containing a sequence corresponding to amino acids 166-290 of human A-RAF (P10398).

Synonyms

PKS2; A-RAF; ARAF1; RAFA1

Contact

☎ | 400-999-6126

✉ | cn.market@abclonal.com.cn

🌐 | www.abclonal.com.cn

Product Information

Source

Rabbit

Isotype

IgG

Purification

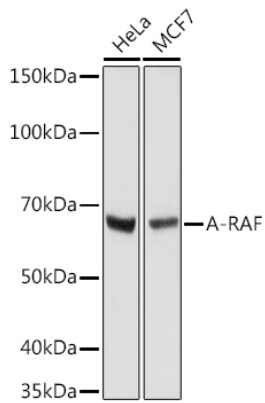
Affinity purification

Storage

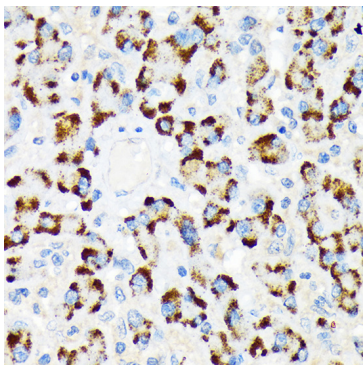
Store at -20°C. Avoid freeze / thaw cycles.

Buffer: PBS with 0.02% sodium azide, 0.05% BSA, 50% glycerol, pH7.3.

Validation Data



Western blot analysis of various lysates using A-RAF Rabbit mAb (A8687) at 1:1000 dilution.
Secondary antibody: HRP Goat Anti-Rabbit IgG (H+L) (AS014) at 1:10000 dilution.
Lysates/proteins: 25µg per lane.
Blocking buffer: 3% nonfat dry milk in TBST.
Detection: ECL Basic Kit (RM00020).
Exposure time: 10s.



Immunohistochemistry analysis of paraffin-embedded Human liver using A-RAF Rabbit mAb (A8687) at dilution of 1:100 (40x lens). Perform microwave antigen retrieval with 10 mM Tris/EDTA buffer pH 9.0 before commencing with IHC staining protocol.