

OPRD1 Rabbit mAb

Catalog No.: A8694

Recombinant

1 Publications

Basic Information

Observed MW

40kDa

Calculated MW

40kDa

Category

Primary antibody

Applications

WB, ELISA

Cross-Reactivity

Human, Mouse, Rat

CloneNo number

ARC1786

Background

Enables G protein-coupled enkephalin receptor activity. Involved in several processes, including G protein-coupled opioid receptor signaling pathway; cellular response to hypoxia; and positive regulation of peptidyl-serine phosphorylation. Is intrinsic component of plasma membrane.

Recommended Dilutions

WB 1:1000 - 1:6000

ELISA Recommended starting concentration is 1 µg/mL. Please optimize the concentration based on your specific assay requirements.

Immunogen Information

Gene ID

4985

Swiss Prot

P41143

Immunogen

Synthetic peptide. This information is considered to be commercially sensitive.

Synonyms

DOP; DOR; DOR1; OPRD; OPRD1

Contact

☎ | 400-999-6126

✉ | cn.market@abclonal.com.cn

🌐 | www.abclonal.com.cn

Product Information

Source

Rabbit

Isotype

IgG

Purification

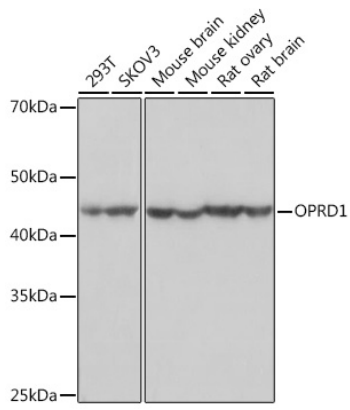
Affinity purification

Storage

Store at -20°C. Avoid freeze / thaw cycles.

Buffer: PBS containing 50% glycerol and 0.05% BSA, preserved with proclin300 or sodium azide (as specified on the Certificate of Analysis), pH 7.3.

Validation Data



Western blot analysis of various lysates using OPRD1 Rabbit mAb (A8694) at 1:1000 dilution.
Secondary antibody: HRP-conjugated Goat anti-Rabbit IgG (H+L) (AS014) at 1:10000 dilution.
Lysates/proteins: 25µg per lane.
Blocking buffer: 3% nonfat dry milk in TBST.
Detection: ECL Basic Kit (RM00020).
Exposure time: 3s.