

SSTR5 Rabbit mAb

Catalog No.: A8698 **Recombinant** **1 Publications**

Basic Information

Observed MW

45kDa

Calculated MW

39kDa

Category

Primary antibody

Applications

ELISA, WB, IHC-P

Cross-Reactivity

Human, Mouse, Rat

CloneNo number

ARC1282

Background

Somatostatin and its related peptide cortistatin exert multiple biological actions on normal and tumoral tissue targets by interacting with somatostatin receptors (SSTRs). The protein encoded by this gene is one of the SSTRs, which is a multi-pass membrane protein and belongs to the G-protein coupled receptor 1 family. The activity of this receptor is mediated by G proteins which inhibit adenylyl cyclase, and different regions of this receptor molecule are required for the activation of different signaling pathways. A mutation in this gene results in somatostatin analog resistance. Alternatively spliced transcript variants have been identified in this gene.

Recommended Dilutions

WB	1:500 - 1:2000
IHC-P	1:500 - 1:1000

Immunogen Information

Gene ID

6755

Swiss Prot

P35346

Immunogen

A synthetic peptide corresponding to a sequence within amino acids 1-100 of human SSTR5 (P35346).

Synonyms

SST5; SS-5-R; SSTR5

Contact

☎ | 400-999-6126

✉ | cn.market@abclonal.com.cn

🌐 | www.abclonal.com.cn

Product Information

Source

Rabbit

Isotype

IgG

Purification

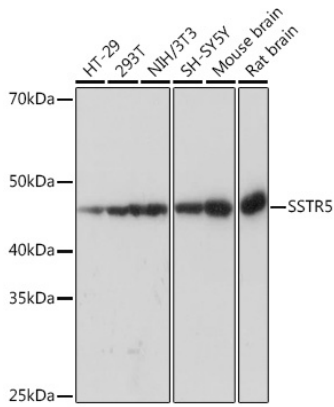
Affinity purification

Storage

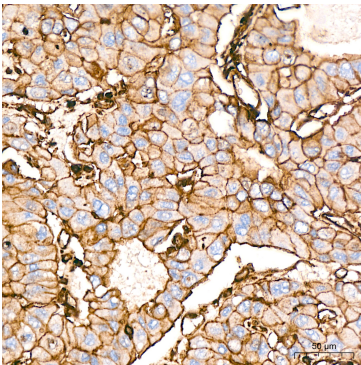
Store at -20°C. Avoid freeze / thaw cycles.

Buffer: PBS with 0.02% sodium azide, 0.05% BSA, 50% glycerol, pH7.3.

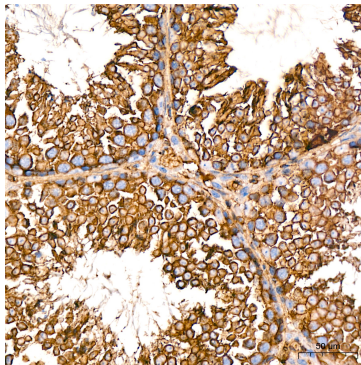
Validation Data



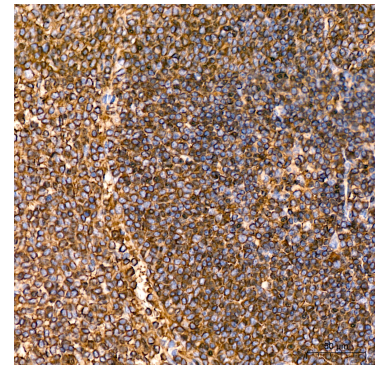
Western blot analysis of various lysates using SSTR5 Rabbit mAb (A8698) at 1:1000 dilution. Secondary antibody: HRP Goat Anti-Rabbit IgG (H+L) (AS014) at 1:10000 dilution. Lysates/proteins: 25µg per lane. Blocking buffer: 3% nonfat dry milk in TBST. Detection: ECL Basic Kit (RM00020). Exposure time: 3s.



Immunohistochemistry analysis of SSTR5 in paraffin-embedded human liver cancer tissue using SSTR5 Rabbit mAb (A8698) at a dilution of 1:800 (40x lens). High pressure antigen retrieval was performed with 0.01 M citrate buffer (pH 6.0) prior to IHC staining.



Immunohistochemistry analysis of SSTR5 in paraffin-embedded mouse testis tissue using SSTR5 Rabbit mAb (A8698) at a dilution of 1:800 (40x lens). High pressure antigen retrieval was performed with 0.01 M citrate buffer (pH 6.0) prior to IHC staining.



Immunohistochemistry analysis of SSTR5 in paraffin-embedded rat spleen tissue using SSTR5 Rabbit mAb (A8698) at a dilution of 1:800 (40x lens). High pressure antigen retrieval was performed with 0.01 M citrate buffer (pH 6.0) prior to IHC staining.