

IGHA1 Rabbit pAb

Catalog No.: A8708

Basic Information

Observed MW

60kDa

Calculated MW

38kDa

Category

Primary antibody

Applications

ELISA,WB,FC

Cross-Reactivity

Human

Background

Contributes to immunoglobulin receptor binding activity. Involved in antibacterial humoral response; glomerular filtration; and positive regulation of respiratory burst. Located in extracellular space. Part of monomeric IgA immunoglobulin complex and secretory dimeric IgA immunoglobulin complex.

Recommended Dilutions

WB 1:500 - 1:1000

FC 1:20 - 1:50

Immunogen Information

Gene ID

3493

Swiss Prot

P01876

Immunogen

A synthetic peptide corresponding to a sequence within amino acids 122-353 of human IGHAI (P01876).

Synonyms

IgA1; IGHAI

Contact

☎ | 400-999-6126

✉ | cn.market@abclonal.com.cn

🌐 | www.abclonal.com.cn

Product Information

Source

Rabbit

Isotype

IgG

Purification

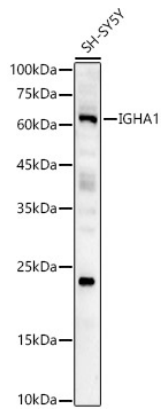
Affinity purification

Storage

Store at -20°C. Avoid freeze / thaw cycles.

Buffer: PBS with 0.05% proclin300,50% glycerol,pH7.3.

Validation Data



Western blot analysis of lysates from SH-SY5Y cells, using IGHA1 Rabbit pAb (A8708) at 1:2000 dilution.
Secondary antibody: HRP Goat Anti-Rabbit IgG (H+L) (AS014) at 1:10000 dilution.
Lysates/proteins: 25µg per lane.
Blocking buffer: 3% nonfat dry milk in TBST.
Detection: ECL Basic Kit (RM00020).
Exposure time: 180s.