

Tropomyosin 1 Rabbit mAb

Catalog No.: A8723 **Recombinant** **1 Publications**

Basic Information

Observed MW

33 kDa

Calculated MW

33 kDa

Category

Primary antibody

Applications

WB,IP,IF-P,IHC-P,ELISA

Cross-Reactivity

Mouse, Rat

CloneNo number

ARC1283


Background

This gene is a member of the tropomyosin family of highly conserved, widely distributed actin-binding proteins involved in the contractile system of striated and smooth muscles and the cytoskeleton of non-muscle cells. Tropomyosin is composed of two alpha-helical chains arranged as a coiled-coil. It is polymerized end to end along the two grooves of actin filaments and provides stability to the filaments. The encoded protein is one type of alpha helical chain that forms the predominant tropomyosin of striated muscle, where it also functions in association with the troponin complex to regulate the calcium-dependent interaction of actin and myosin during muscle contraction. In smooth muscle and non-muscle cells, alternatively spliced transcript variants encoding a range of isoforms have been described. Mutations in this gene are associated with type 3 familial hypertrophic cardiomyopathy and dilated cardiomyopathy 1Y.

Recommended Dilutions

WB	1:1000 - 1:4000
IP	0.5µg-4µg antibody for 400µg-600µg extracts of whole cells
IF-P	1:50 - 1:200
IHC-P	1:50 - 1:200
ELISA	Recommended starting concentration is 1 µg/mL. Please optimize the concentration based on your specific assay requirements.

Contact

 | 400-999-6126

 | cn.market@abclonal.com.cn

 | www.abclonal.com.cn

Immunogen Information

Gene ID

7168

Swiss Prot

P09493

Immunogen

Synthetic peptide. This information is considered to be commercially sensitive.

Synonyms

CMH3; TMSA; CMD1Y; LVNC9; C15orf13; HEL-S-265; HTM-alpha; Tropomyosin 1

Product Information

Source

Rabbit

Isotype

IgG

Purification

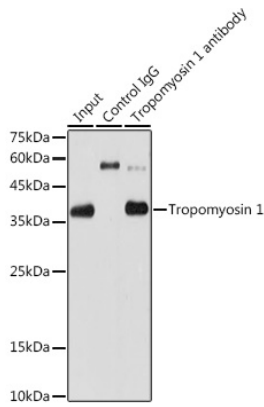
Affinity purification

Storage

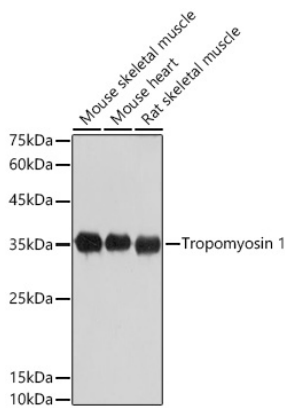
Store at -20°C. Avoid freeze / thaw cycles.

Buffer: PBS containing 50% glycerol and 0.05% BSA, preserved with proclin300 or sodium azide (as specified on the Certificate of Analysis), pH 7.3.

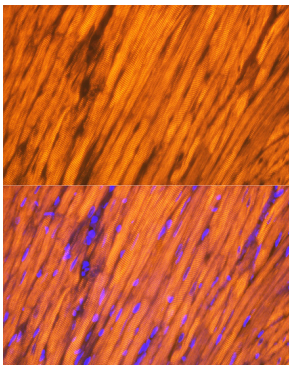
Validation Data



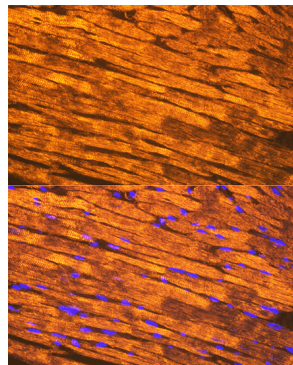
Immunoprecipitation analysis of 600 μ g extracts of Rat heart using 3 μ g Tropomyosin 1 Rabbit mAb (A8723). Western blot was performed from the immunoprecipitate using Tropomyosin 1 Rabbit mAb (A8723) at a dilution of 1:1000.



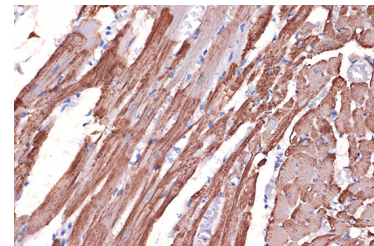
Western blot analysis of various lysates using Tropomyosin 1 Rabbit mAb (A8723) at 1:1000 dilution. Secondary antibody: HRP-conjugated Goat anti-Rabbit IgG (H+L) (AS014) at 1:10000 dilution. Lysates/proteins: 25 μ g per lane. Blocking buffer: 3% nonfat dry milk in TBST. Detection: ECL Basic Kit (RM00020). Exposure time: 3s.



Immunofluorescence analysis of paraffin-embedded rat heart using Tropomyosin 1 Rabbit mAb (A8723) at dilution of 1:100 (40x lens). Secondary antibody: Cy3-conjugated Goat anti-Rabbit IgG (H+L) (AS007) at 1:500 dilution. Blue: DAPI for nuclear staining.

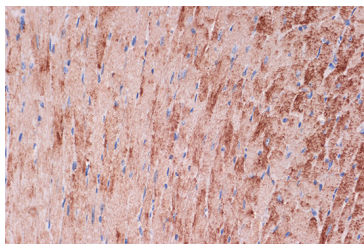


Immunofluorescence analysis of paraffin-embedded mouse heart using Tropomyosin 1 Rabbit mAb (A8723) at dilution of 1:100 (40x lens). Secondary antibody: Cy3-conjugated Goat anti-Rabbit IgG (H+L) (AS007) at 1:500 dilution. Blue: DAPI for nuclear staining.



Immunohistochemistry analysis of paraffin-embedded Rat heart using Tropomyosin 1 Rabbit mAb (A8723) at dilution of 1:100 (40x lens). Microwave antigen retrieval performed with 0.01M Tris/EDTA Buffer (pH 9.0) prior to IHC staining.

Validation Data



Immunohistochemistry analysis of paraffin-embedded Mouse heart using Tropomyosin 1 Rabbit mAb (A8723) at dilution of 1:100 (40x lens). Microwave antigen retrieval performed with 0.01M Tris/EDTA Buffer (pH 9.0) prior to IHC staining.