

THOP1 Rabbit pAb

Catalog No.: A8756 **1 Publications**

Basic Information

Observed MW

79kDa

Calculated MW

79kDa

Category

Primary antibody

Applications

ELISA, WB

Cross-Reactivity

Human, Mouse, Rat

Background

The protein encoded by this gene is a kinase that uses zinc as a cofactor. The encoded oligopeptidase cleaves cytosolic peptides, making them unavailable for display on antigen-presenting cells. This protein also cleaves neuropeptides under 20 aa in length and can degrade beta-amyloid precursor protein to amyloidogenic peptides.

Recommended Dilutions

WB 1:500 - 1:2000

Immunogen Information

Gene ID

7064

Swiss Prot

P52888

Immunogen

Recombinant fusion protein containing a sequence corresponding to amino acids 1-260 of human THOP1 (NP_003240.1).

Synonyms

TOP; MP78; EP24.15; MEPD_HUMAN; THOP1

Contact

 | 400-999-6126

 | cn.market@abclonal.com.cn

 | www.abclonal.com.cn

Product Information

Source

Rabbit

Isotype

IgG

Purification

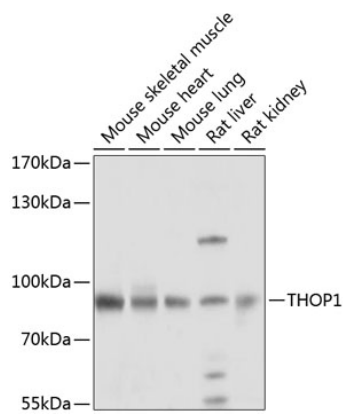
Affinity purification

Storage

Store at -20°C. Avoid freeze / thaw cycles.

Buffer: PBS with 0.02% sodium azide, 50% glycerol, pH 7.3.

Validation Data



Western blot analysis of extracts of various cell lines, using THOP1 antibody (A8756) at 1:1000 dilution.
Secondary antibody: HRP Goat Anti-Rabbit IgG (H+L) (AS014) at 1:10000 dilution.
Lysates/proteins: 25 μ g per lane.
Blocking buffer: 3% nonfat dry milk in TBST.
Detection: ECL Basic Kit (RM00020).
Exposure time: 5s.