

# LEO1 Rabbit pAb

Catalog No.: A8806

## Basic Information

### Observed MW

105kDa

### Calculated MW

75kDa

### Category

Primary antibody

### Applications

ELISA, WB, IHC-P, IF/ICC

### Cross-Reactivity

Human, Mouse, Rat

## Background

LEO1, parafibromin (CDC73; MIM 607393), CTR9 (MIM 609366), and PAF1 (MIM 610506) form the PAF protein complex that associates with the RNA polymerase II subunit POLR2A (MIM 180660) and with a histone methyltransferase complex (Rozenblatt-Rosen et al., 2005 [PubMed 15632063]).

## Recommended Dilutions

WB	1:500 - 1:1000
IHC-P	1:50 - 1:200
IF/ICC	1:50 - 1:200

## Immunogen Information

### Gene ID

123169

### Swiss Prot

Q8WVC0

### Immunogen

Recombinant fusion protein containing a sequence corresponding to amino acids 340-570 of human LEO1 (NP\_620147.1).

### Synonyms

RDL; LEO1

## Contact

☎ | 400-999-6126

✉ | [cn.market@abclonal.com.cn](mailto:cn.market@abclonal.com.cn)

🌐 | [www.abclonal.com.cn](http://www.abclonal.com.cn)

## Product Information

### Source

Rabbit

### Isotype

IgG

### Purification

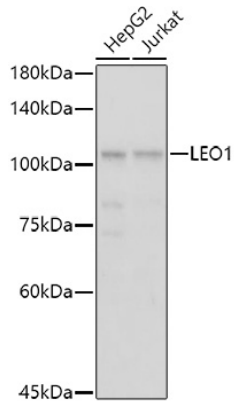
Affinity purification

### Storage

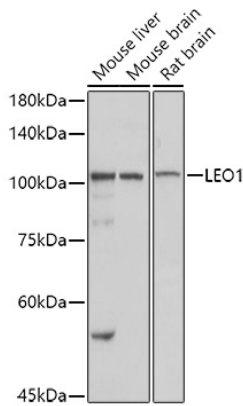
Store at -20°C. Avoid freeze / thaw cycles.

Buffer: PBS with 0.01% thimerosal, 50% glycerol, pH7.3.

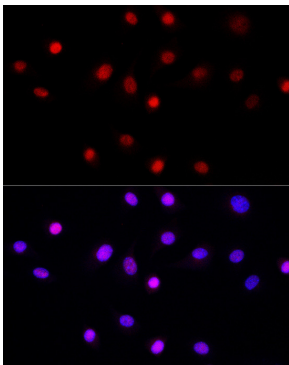
## Validation Data



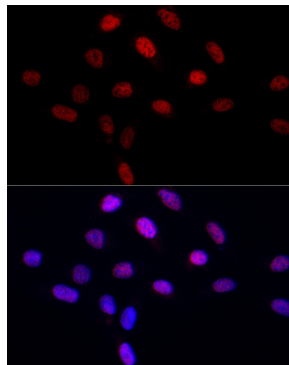
Western blot analysis of various lysates using LEO1 Rabbit pAb (A8806) at 1:1000 dilution. Secondary antibody: HRP Goat Anti-Rabbit IgG (H+L) (AS014) at 1:10000 dilution. Lysates/proteins: 25µg per lane. Blocking buffer: 3% nonfat dry milk in TBST. Detection: ECL Basic Kit (RM00020). Exposure time: 1s.



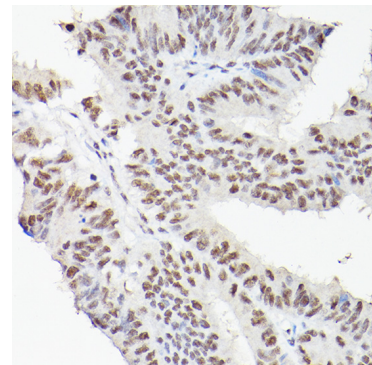
Western blot analysis of various lysates using LEO1 Rabbit pAb (A8806) at 1:1000 dilution. Secondary antibody: HRP Goat Anti-Rabbit IgG (H+L) (AS014) at 1:10000 dilution. Lysates/proteins: 25µg per lane. Blocking buffer: 3% nonfat dry milk in TBST. Detection: ECL Basic Kit (RM00020). Exposure time: 1s.



Immunofluorescence analysis of NIH/3T3 cells using LEO1 Rabbit pAb (A8806) at dilution of 1:50 (40x lens). Secondary antibody: Cy3 Goat Anti-Rabbit IgG (H+L) (AS007) at 1:500 dilution. Blue: DAPI for nuclear staining.



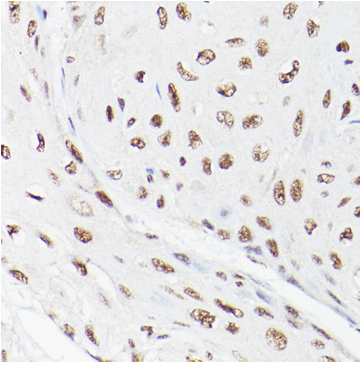
Immunofluorescence analysis of U2OS cells using LEO1 Rabbit pAb (A8806) at dilution of 1:50 (40x lens). Secondary antibody: Cy3 Goat Anti-Rabbit IgG (H+L) (AS007) at 1:500 dilution. Blue: DAPI for nuclear staining.



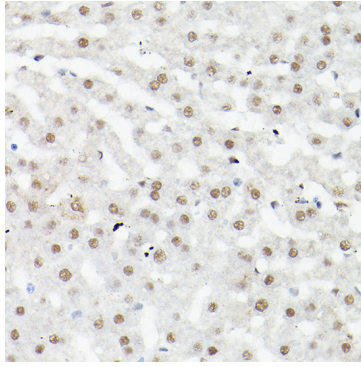
Immunohistochemistry analysis of paraffin-embedded Human colon carcinoma using LEO1 Rabbit pAb (A8806) at dilution of 1:100 (40x lens). Perform high pressure antigen retrieval with 10 mM citrate buffer pH 6.0 before commencing with IHC staining protocol.

## Validation Data

---



Immunohistochemistry analysis of paraffin-embedded Human esophageal cancer using LEO1 Rabbit pAb (A8806) at dilution of 1:100 (40x lens). Perform high pressure antigen retrieval with 10 mM citrate buffer pH 6.0 before commencing with IHC staining protocol.



Immunohistochemistry analysis of paraffin-embedded Mouse liver using LEO1 Rabbit pAb (A8806) at dilution of 1:100 (40x lens). Perform high pressure antigen retrieval with 10 mM citrate buffer pH 6.0 before commencing with IHC staining protocol.