

DDT Rabbit pAb

Catalog No.: A8816

Basic Information

Observed MW

13kDa

Calculated MW

13kDa

Category

Primary antibody

Applications

ELISA, WB

Cross-Reactivity

Human, Mouse, Rat

Background

D-dopachrome tautomerase converts D-dopachrome into 5,6-dihydroxyindole. The DDT gene is related to the migration inhibitory factor (MIF) in terms of sequence, enzyme activity, and gene structure. DDT and MIF are closely linked on chromosome 22.

Recommended Dilutions

WB 1:200 - 1:2000

Immunogen Information

Gene ID

1652

Swiss Prot

P30046

Immunogen

Recombinant fusion protein containing a sequence corresponding to amino acids 1-118 of human DDT (NP_001346.1).

Synonyms

D-DT; DDCT; MIF2; MIF-2; DDT

Contact

☎ | 400-999-6126

✉ | cn.market@abclonal.com.cn

🌐 | www.abclonal.com.cn

Product Information

Source

Rabbit

Isotype

IgG

Purification

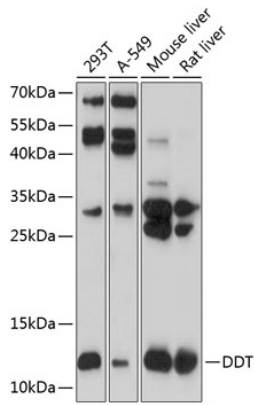
Affinity purification

Storage

Store at -20°C. Avoid freeze / thaw cycles.

Buffer: PBS with 0.01% thimerosal, 50% glycerol, pH7.3.

Validation Data



Western blot analysis of various lysates using DDT Rabbit pAb (A8816) at 1:1000 dilution.
Secondary antibody: HRP Goat Anti-Rabbit IgG (H+L) (AS014) at 1:10000 dilution.
Lysates/proteins: 25µg per lane.
Blocking buffer: 3% nonfat dry milk in TBST.
Detection: ECL Basic Kit (RM00020).
Exposure time: 30s.