

# NUP133 Rabbit pAb

Catalog No.: A8818 **1 Publications**

## Basic Information

**Observed MW**

133kDa

**Calculated MW**

129kDa

**Category**

Primary antibody

**Applications**

ELISA, WB

**Cross-Reactivity**

Human

## Background

The nuclear envelope creates distinct nuclear and cytoplasmic compartments in eukaryotic cells. It consists of two concentric membranes perforated by nuclear pores, large protein complexes that form aqueous channels to regulate the flow of macromolecules between the nucleus and the cytoplasm. These complexes are composed of at least 100 different polypeptide subunits, many of which belong to the nucleoporin family. The nucleoporin protein encoded by this gene displays evolutionarily conserved interactions with other nucleoporins. This protein, which localizes to both sides of the nuclear pore complex at interphase, remains associated with the complex during mitosis and is targeted at early stages to the reforming nuclear envelope. This protein also localizes to kinetochores of mitotic cells.

## Recommended Dilutions

WB 1:1000 - 1:2000

## Immunogen Information

**Gene ID**

55746

**Swiss Prot**

Q8WUM0

**Immunogen**

Recombinant fusion protein containing a sequence corresponding to amino acids 730-930 of human NUP133 (NP\_060700.2).

**Synonyms**

GAMOS8; NPHS18; hNUP133; NUP133

## Contact

 | 400-999-6126 | [cn.market@abclonal.com.cn](mailto:cn.market@abclonal.com.cn) | [www.abclonal.com.cn](http://www.abclonal.com.cn)

## Product Information

**Source**

Rabbit

**Isotype**

IgG

**Purification**

Affinity purification

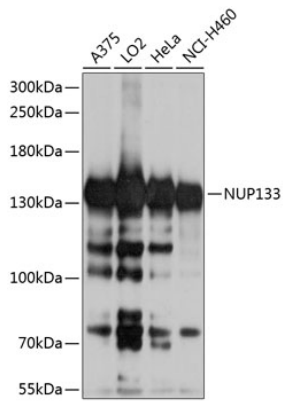
**Storage**

Store at -20°C. Avoid freeze / thaw cycles.

Buffer: PBS with 0.02% sodium azide, 50% glycerol, pH7.3.

## Validation Data

---



Western blot analysis of extracts of various cell lines, using NUP133 antibody (A8818) at 1:1000 dilution.  
Secondary antibody: HRP Goat Anti-Rabbit IgG (H+L) (AS014) at 1:10000 dilution.  
Lysates/proteins: 25µg per lane.  
Blocking buffer: 3% nonfat dry milk in TBST.  
Detection: ECL Basic Kit (RM00020).  
Exposure time: 5s.