

SRFBP1 Rabbit pAb

Catalog No.: A8856

Basic Information

Observed MW

48kDa

Calculated MW

49kDa

Category

Primary antibody

Applications

ELISA, WB

Cross-Reactivity

Mouse

Background

Enables RNA binding activity. Predicted to be involved in maturation of SSU-rRNA. Predicted to be located in perinuclear region of cytoplasm. Predicted to be part of 90S preribosome. Predicted to be active in nucleus.

Recommended Dilutions

WB 1:500 - 1:2000

Immunogen Information

Gene ID

153443

Swiss Prot

Q8NEF9

Immunogen

Recombinant fusion protein containing a sequence corresponding to amino acids 1-300 of human SRFBP1 (NP_689759.2).

Synonyms

P49; Rib1; BUD22; STRAP; p49/STRAP; SRFBP1

Contact

 | 400-999-6126

 | cn.market@abclonal.com.cn

 | www.abclonal.com.cn

Product Information

Source

Rabbit

Isotype

IgG

Purification

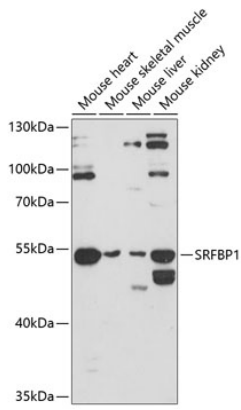
Affinity purification

Storage

Store at -20°C. Avoid freeze / thaw cycles.

Buffer: PBS with 0.01% thimerosal, 50% glycerol, pH7.3.

Validation Data



Western blot analysis of various lysates using SRFBP1 Rabbit pAb (A8856) at 1:3000 dilution.
Secondary antibody: HRP Goat Anti-Rabbit IgG (H+L) (AS014) at 1:10000 dilution.
Lysates/proteins: 25µg per lane.
Blocking buffer: 3% nonfat dry milk in TBST.
Detection: ECL Enhanced Kit (RM00021).
Exposure time: 90s.