

ZMPSTE24 Rabbit pAb

Catalog No.: A8858 **1 Publications**

Basic Information

Observed MW

50kDa

Calculated MW

55kDa

Category

Primary antibody

Applications

WB

Cross-Reactivity

Human, Mouse

Background

This gene encodes a member of the peptidase M48A family. The encoded protein is a zinc metalloproteinase involved in the two step post-translational proteolytic cleavage of carboxy terminal residues of farnesylated prelamin A to form mature lamin A. Mutations in this gene have been associated with mandibuloacral dysplasia and restrictive dermopathy.

Recommended Dilutions

WB 1:500 - 1:1000

Immunogen Information

Gene ID

10269

Swiss Prot

O75844

Immunogen

A synthetic Peptide of human ZMPSTE24

Synonyms

HGPS; PRO1; FACE1; RSDM1; STE24; FACE-1; Ste24p; ZMPSTE24

Contact

 | 400-999-6126

 | cn.market@abclonal.com.cn

 | www.abclonal.com.cn

Product Information

Source

Rabbit

Isotype

IgG

Purification

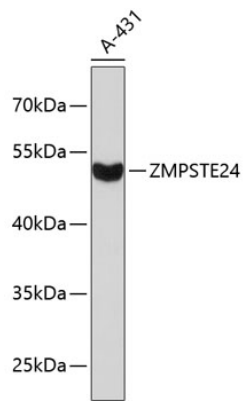
Affinity purification

Storage

Store at 4°C. Avoid freeze / thaw cycles.

Buffer: PBS with 0.02% sodium azide, pH7.3.

Validation Data



Western blot analysis of extracts of A-431 cells, using ZMPSTE24 antibody (A8858).
Secondary antibody: HRP Goat Anti-Rabbit IgG (H+L) (AS014) at 1:10000 dilution.
Lysates/proteins: 25µg per lane.
Blocking buffer: 3% nonfat dry milk in TBST.