

Butyrylcholinesterase Rabbit mAb

Catalog No.: A8861 **Recombinant**

Basic Information

Observed MW

90kDa

Calculated MW

68kDa

Category

Primary antibody

Applications

ELISA, WB

Cross-Reactivity

Human

CloneNo number

ARC1328

Background

This gene encodes a cholinesterase enzyme and member of the type-B carboxylesterase/lipase family of proteins. The encoded enzyme exhibits broad substrate specificity and is involved in the detoxification of poisons including organophosphate nerve agents and pesticides, and the metabolism of drugs including cocaine, heroin and aspirin. Humans homozygous for certain mutations in this gene exhibit prolonged apnea after administration of the muscle relaxant succinylcholine.

Recommended Dilutions

WB 1:500 - 1:1000

Immunogen Information

Gene ID

590

Swiss Prot

P06276

Immunogen

A synthetic peptide corresponding to a sequence within amino acids 500-602 of human Butyrylcholinesterase (P06276).

Synonyms

E1; CHE1; CHE2; BCHED; Butyrylcholinesterase

Contact

☎ | 400-999-6126

✉ | cn.market@abclonal.com.cn

🌐 | www.abclonal.com.cn

Product Information

Source

Rabbit

Isotype

IgG

Purification

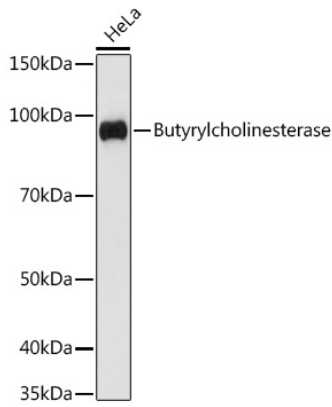
Affinity purification

Storage

Store at -20°C. Avoid freeze / thaw cycles.

Buffer: PBS with 0.02% sodium azide, 0.05% BSA, 50% glycerol, pH7.3.

Validation Data



Western blot analysis of extracts of HeLa cells, using Butyrylcholinesterase antibody (A8861) at 1:1000 dilution.

Secondary antibody: HRP Goat Anti-Rabbit IgG (H+L) (AS014) at 1:10000 dilution.

Lysates/proteins: 25µg per lane.

Blocking buffer: 3% nonfat dry milk in TBST.

Detection: ECL Basic Kit (RM00020).

Exposure time: 60s.