

# ARL8B Rabbit pAb

Catalog No.: A8869

## Basic Information

### Observed MW

21kDa

### Calculated MW

22kDa

### Category

Primary antibody

### Applications

ELISA, WB, IF/ICC

### Cross-Reactivity

Human, Mouse

## Background

Enables guanyl ribonucleotide binding activity and tubulin binding activity. Involved in several processes, including calcium ion regulated lysosome exocytosis; lysosomal transport; and vesicle fusion. Located in cytolytic granule membrane; midbody; and spindle midzone. Colocalizes with lysosomal membrane.

## Recommended Dilutions

WB 1:500 - 1:3000

IF/ICC 1:50 - 1:200

## Immunogen Information

### Gene ID

55207

### Swiss Prot

Q9NVJ2

### Immunogen

Recombinant fusion protein containing a sequence corresponding to amino acids 127-186 of human ARL8B (NP\_060654.1).

### Synonyms

Gie1; ARL10C; ARL8B

## Contact

☎ | 400-999-6126

✉ | [cn.market@abclonal.com.cn](mailto:cn.market@abclonal.com.cn)

🌐 | [www.abclonal.com.cn](http://www.abclonal.com.cn)

## Product Information

### Source

Rabbit

### Isotype

IgG

### Purification

Affinity purification

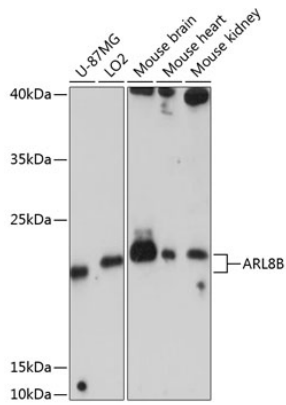
### Storage

Store at -20°C. Avoid freeze / thaw cycles.

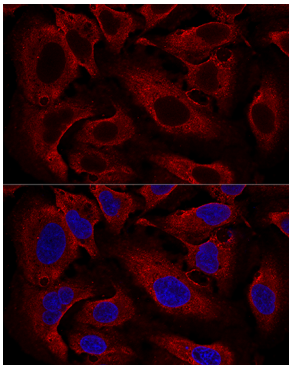
Buffer: PBS with 0.01% thimerosal, 50% glycerol, pH7.3.

## Validation Data

---



Western blot analysis of various lysates using ARL8B Rabbit pAb (A8869) at 1:3000 dilution. Secondary antibody: HRP Goat Anti-Rabbit IgG (H+L) (AS014) at 1:10000 dilution. Lysates/proteins: 25µg per lane. Blocking buffer: 3% nonfat dry milk in TBST. Detection: ECL Enhanced Kit (RM00021). Exposure time: 30s.



Confocal immunofluorescence analysis of U2OS cells using ARL8B Rabbit pAb (A8869) at dilution of 1:100. Blue: DAPI for nuclear staining.