

Arp2 Rabbit mAb

Catalog No.: A8876 **Recombinant**

Basic Information

Observed MW

45kDa

Calculated MW

45kDa

Category

Primary antibody

Applications

ELISA, WB, IP

Cross-Reactivity

Human, Mouse, Rat

CloneNo number

ARC1336

Background

The specific function of this gene has not yet been determined; however, the protein it encodes is known to be a major constituent of the ARP2/3 complex. This complex is located at the cell surface and is essential to cell shape and motility through lamellipodial actin assembly and protrusion. Two transcript variants encoding different isoforms have been found for this gene.

Recommended Dilutions

WB 1:500 - 1:1000

IP 0.5µg-4µg antibody for
200µg-400µg extracts of
whole cells

Immunogen Information

Gene ID

10097

Swiss Prot

P61160

Immunogen

A synthetic peptide corresponding to a sequence within amino acids 295-394 of human Arp2 (P61160).

Synonyms

ARP2; Arp2

Contact

 | 400-999-6126

 | cn.market@abclonal.com.cn

 | www.abclonal.com.cn

Product Information

Source

Rabbit

Isotype

IgG

Purification

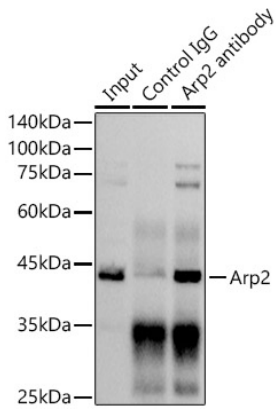
Affinity purification

Storage

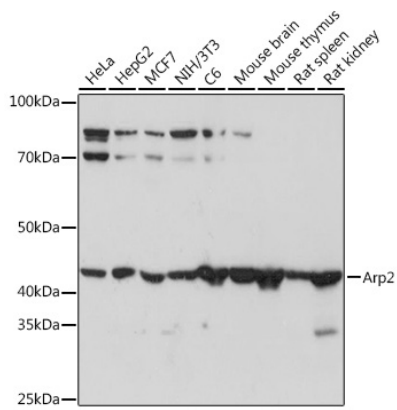
Store at -20°C. Avoid freeze / thaw cycles.

Buffer: PBS with 0.02% sodium azide, 0.05% BSA, 50% glycerol, pH7.3.

Validation Data



Immunoprecipitation analysis of 300 μ g extracts of C6 cells using 3 μ g Arp2 antibody (A8876). Western blot was performed from the immunoprecipitate using Arp2 antibody (A8876) at a dilution of 1:1000.



Western blot analysis of various lysates using Arp2 Rabbit mAb (A8876) at 1:1000 dilution. Secondary antibody: HRP Goat Anti-Rabbit IgG (H+L) (AS014) at 1:10000 dilution. Lysates/proteins: 25 μ g per lane. Blocking buffer: 3% nonfat dry milk in TBST. Detection: ECL Basic Kit (RM00020). Exposure time: 5s.