

# MCTS1 Rabbit pAb

Catalog No.: A9061 **2 Publications**

## Basic Information

### Observed MW

20kDa

### Calculated MW

21kDa

### Category

Primary antibody

### Applications

ELISA, WB, IF/ICC

### Cross-Reactivity

Human, Mouse, Rat

## Background

Predicted to enable translation initiation factor activity. Involved in IRES-dependent viral translational initiation; formation of translation preinitiation complex; and ribosome disassembly. Located in cytosol and plasma membrane. Colocalizes with cytosolic small ribosomal subunit.

## Recommended Dilutions

<b>WB</b>	1:500 - 1:2000
<b>IF/ICC</b>	1:50 - 1:200

## Immunogen Information

### Gene ID

28985

### Swiss Prot

Q9ULC4

### Immunogen

Recombinant fusion protein containing a sequence corresponding to amino acids 1-181 of human MCTS1 (NP\_054779.1).

### Synonyms

MCT1; MCT-1; MCTS1

## Contact

 | 400-999-6126

 | [cn.market@abclonal.com.cn](mailto:cn.market@abclonal.com.cn)

 | [www.abclonal.com.cn](http://www.abclonal.com.cn)

## Product Information

### Source

Rabbit

### Isotype

IgG

### Purification

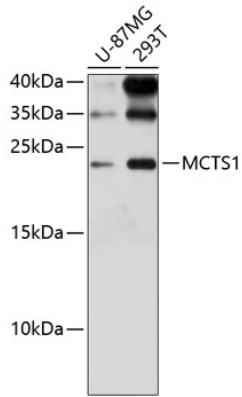
Affinity purification

### Storage

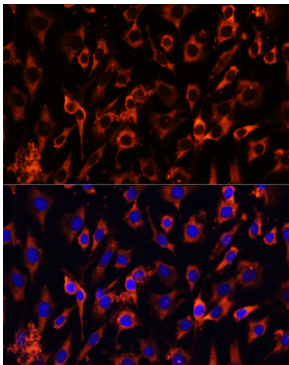
Store at -20°C. Avoid freeze / thaw cycles.

Buffer: PBS with 0.01% thimerosal, 50% glycerol, pH7.3.

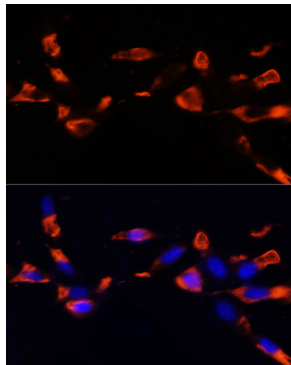
## Validation Data



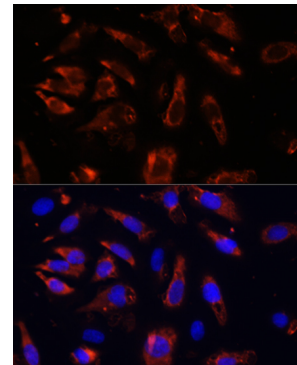
Western blot analysis of various lysates using MCTS1 Rabbit pAb (A9061) at 1:3000 dilution. Secondary antibody: HRP Goat Anti-Rabbit IgG (H+L) (AS014) at 1:10000 dilution. Lysates/proteins: 25µg per lane. Blocking buffer: 3% nonfat dry milk in TBST. Detection: ECL Enhanced Kit (RM00021). Exposure time: 90s.



Immunofluorescence analysis of C6 cells using MCTS1 Rabbit pAb (A9061) at dilution of 1:100 (40x lens). Blue: DAPI for nuclear staining.



Immunofluorescence analysis of NIH/3T3 cells using MCTS1 Rabbit pAb (A9061) at dilution of 1:100 (40x lens). Blue: DAPI for nuclear staining.



Immunofluorescence analysis of U-2OS cells using MCTS1 Rabbit pAb (A9061) at dilution of 1:100 (40x lens). Blue: DAPI for nuclear staining.