

POMP Rabbit pAb

Catalog No.: A9067

Basic Information

Observed MW

16kDa

Calculated MW

16kDa

Category

Primary antibody

Applications

WB, ELISA

Cross-Reactivity

Human

Background

The protein encoded by this gene is a molecular chaperone that binds 20S preproteasome components and is essential for 20S proteasome formation. The 20S proteasome is the proteolytically active component of the 26S proteasome complex. The encoded protein is degraded before the maturation of the 20S proteasome is complete. A variant in the 5' UTR of this gene has been associated with KLiCK syndrome, a rare skin disorder.

Recommended Dilutions

WB 1:500 - 1:1000

ELISA Recommended starting concentration is 1 µg/mL. Please optimize the concentration based on your specific assay requirements.

Immunogen Information

Gene ID

51371

Swiss Prot

Q9Y244

Immunogen

Recombinant protein (or fragment). This information is considered to be commercially sensitive.

Synonyms

UMP1; PRAAS2; HSPC014; C13orf12; PNAS-110; POMP

Contact

☎ | 400-999-6126

✉ | cn.market@abclonal.com.cn

🌐 | www.abclonal.com.cn

Product Information

Source

Rabbit

Isotype

IgG

Purification

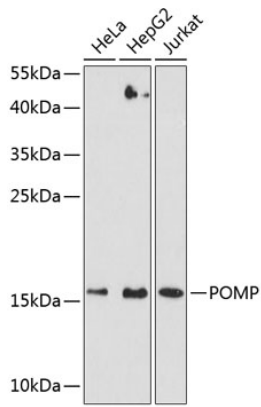
Affinity purification

Storage

Store at -20°C. Avoid freeze / thaw cycles.

Buffer: PBS with 0.01% thimerosal, 50% glycerol, pH7.3.

Validation Data



Western blot analysis of various lysates using POMP Rabbit pAb (A9067) at 1:3000 dilution.
Secondary antibody: HRP-conjugated Goat anti-Rabbit IgG (H+L) (AS014) at 1:10000 dilution.
Lysates/proteins: 25 μ g per lane.
Blocking buffer: 3% nonfat dry milk in TBST.
Detection: ECL Enhanced Kit (RM00021).
Exposure time: 90s.