

FKBP1B Rabbit pAb

Catalog No.: A9074

Basic Information

Observed MW

13kDa

Calculated MW

12kDa

Category

Primary antibody

Applications

ELISA, WB, IF/ICC

Cross-Reactivity

Human, Mouse, Rat

Background

The protein encoded by this gene is a member of the immunophilin protein family, which play a role in immunoregulation and basic cellular processes involving protein folding and trafficking. This encoded protein is a cis-trans prolyl isomerase that binds the immunosuppressants FK506 and rapamycin. It is highly similar to the FK506-binding protein 1A. Its physiological role is thought to be in excitation-contraction coupling in cardiac muscle. There are two alternatively spliced transcript variants of this gene encoding different isoforms.

Recommended Dilutions

WB 1:500 - 1:1000

IF/ICC 1:20 - 1:50

Immunogen Information

Gene ID

2281

Swiss Prot

P68106

Immunogen

A synthetic peptide corresponding to a sequence within amino acids 1-80 of human FKBP1B (NP_473374.1).

Synonyms

OTK4; FKBP1L; PKBP1L; PPlase; FKBP12.6; FKBP1B

Contact

☎ | 400-999-6126

✉ | cn.market@abclonal.com.cn

🌐 | www.abclonal.com.cn

Product Information

Source

Rabbit

Isotype

IgG

Purification

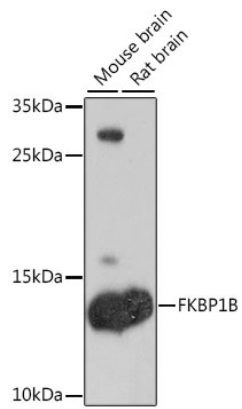
Affinity purification

Storage

Store at -20°C. Avoid freeze / thaw cycles.

Buffer: PBS with 0.01% thimerosal, 50% glycerol, pH7.3.

Validation Data



Western blot analysis of various lysates using FKBP1B Rabbit pAb (A9074) at 1:1000 dilution.
Secondary antibody: HRP Goat Anti-Rabbit IgG (H+L) (AS014) at 1:10000 dilution.
Lysates/proteins: 25µg per lane.
Blocking buffer: 3% nonfat dry milk in TBST.
Detection: ECL Basic Kit (RM00020).
Exposure time: 10s.