

KHSRP Rabbit mAb

Catalog No.: A9075 **Recombinant**

Basic Information

Observed MW

82kDa

Calculated MW

73kDa

Category

Primary antibody

Applications

ELISA, WB, IHC-P, IP

Cross-Reactivity

Human, Mouse, Rat

CloneNo number

ARC1402

Background

The KHSRP gene encodes a multifunctional RNA-binding protein implicated in a variety of cellular processes, including transcription, alternative pre-mRNA splicing, and mRNA localization (Min et al., 1997 [PubMed 9136930]; Gherzi et al., 2004 [PubMed 15175153]).

Recommended Dilutions

WB 1:500 - 1:1000

IHC-P 1:50 - 1:200

IP 0.5µg-4µg antibody for
200µg-400µg extracts of
whole cells

Immunogen Information

Gene ID

8570

Swiss Prot

Q92945

Immunogen

Recombinant fusion protein containing a sequence corresponding to amino acids 1-180 of human KHSRP (Q92945).

Synonyms

p75; FBP2; KSRP; FUBP2; KHSRP

Contact

☎ | 400-999-6126

✉ | cn.market@abclonal.com.cn

🌐 | www.abclonal.com.cn

Product Information

Source

Rabbit

Isotype

IgG

Purification

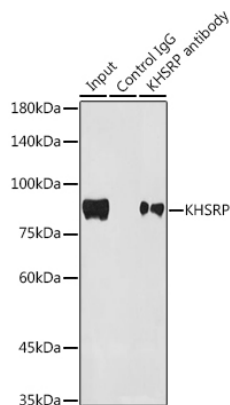
Affinity purification

Storage

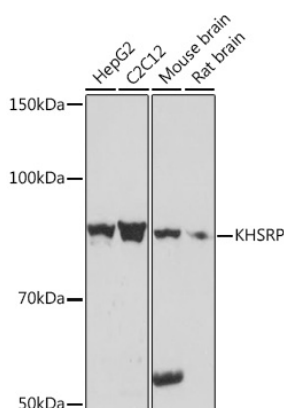
Store at -20°C. Avoid freeze / thaw cycles.

Buffer: PBS with 0.02% sodium azide, 0.05% BSA, 50% glycerol, pH7.3.

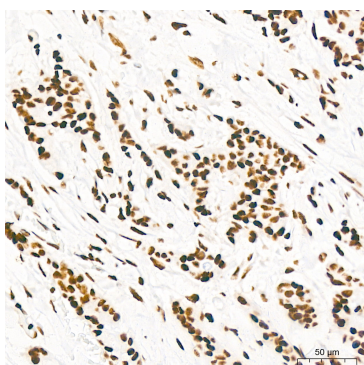
Validation Data



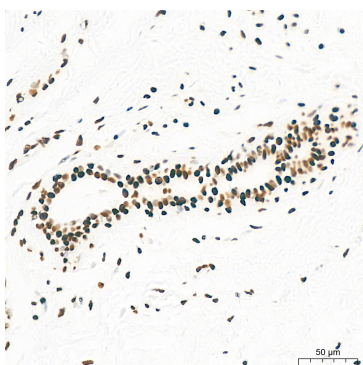
Immunoprecipitation analysis of 300 µg extracts of HepG2 cells using 3 µg KHSRP antibody (A9075). Western blot was performed from the immunoprecipitate using KHSRP antibody (A9075) at a dilution of 1:1000.



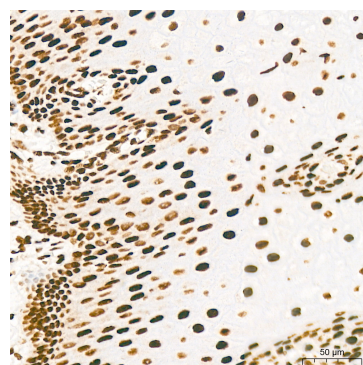
Western blot analysis of various lysates using KHSRP Rabbit mAb (A9075) at 1:1000 dilution. Secondary antibody: HRP Goat Anti-Rabbit IgG (H+L) (AS014) at 1:10000 dilution. Lysates/proteins: 25µg per lane. Blocking buffer: 3% nonfat dry milk in TBST. Detection: ECL Basic Kit (RM00020). Exposure time: 10s.



Immunohistochemistry analysis of KHSRP in paraffin-embedded human breast cancer tissue using KHSRP Rabbit mAb (A9075) at a dilution of 1:200 (40x lens). High pressure antigen retrieval was performed with 0.01 M citrate buffer (pH 6.0) prior to IHC staining.

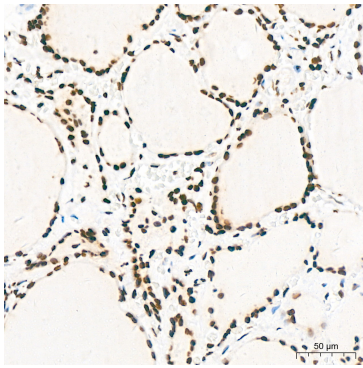


Immunohistochemistry analysis of KHSRP in paraffin-embedded human breast tissue using KHSRP Rabbit mAb (A9075) at a dilution of 1:200 (40x lens). High pressure antigen retrieval was performed with 0.01 M citrate buffer (pH 6.0) prior to IHC staining.

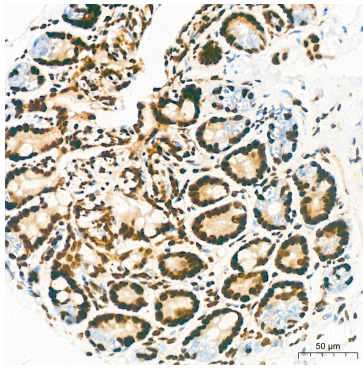


Immunohistochemistry analysis of KHSRP in paraffin-embedded human esophagus tissue using KHSRP Rabbit mAb (A9075) at a dilution of 1:200 (40x lens). High pressure antigen retrieval was performed with 0.01 M citrate buffer (pH 6.0) prior to IHC staining.

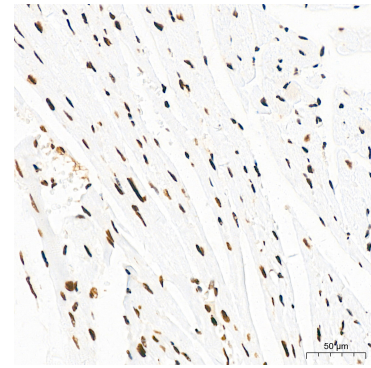
Validation Data



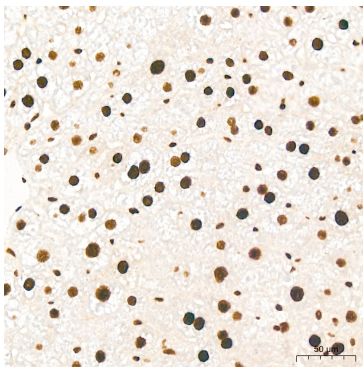
Immunohistochemistry analysis of KHSRP in paraffin-embedded human thyroid tissue using KHSRP Rabbit mAb (A9075) at a dilution of 1:200 (40x lens). High pressure antigen retrieval was performed with 0.01 M citrate buffer (pH 6.0) prior to IHC staining.



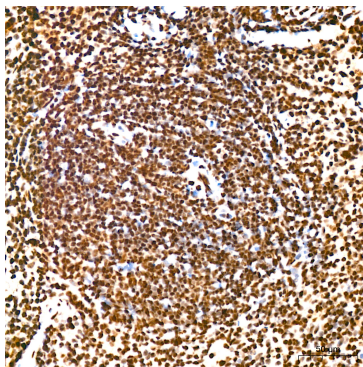
Immunohistochemistry analysis of KHSRP in paraffin-embedded mouse colon tissue using KHSRP Rabbit mAb (A9075) at a dilution of 1:200 (40x lens). High pressure antigen retrieval was performed with 0.01 M citrate buffer (pH 6.0) prior to IHC staining.



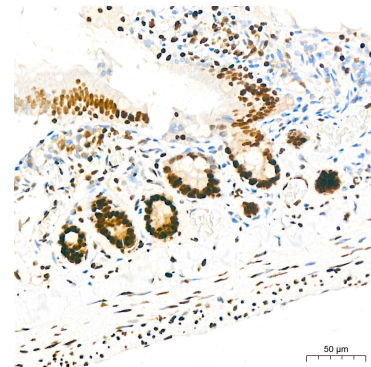
Immunohistochemistry analysis of KHSRP in paraffin-embedded mouse heart tissue using KHSRP Rabbit mAb (A9075) at a dilution of 1:200 (40x lens). High pressure antigen retrieval was performed with 0.01 M citrate buffer (pH 6.0) prior to IHC staining.



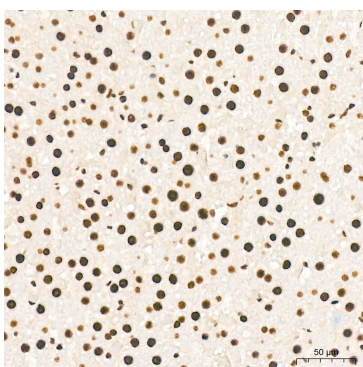
Immunohistochemistry analysis of KHSRP in paraffin-embedded mouse liver tissue using KHSRP Rabbit mAb (A9075) at a dilution of 1:200 (40x lens). High pressure antigen retrieval was performed with 0.01 M citrate buffer (pH 6.0) prior to IHC staining.



Immunohistochemistry analysis of KHSRP in paraffin-embedded mouse spleen tissue using KHSRP Rabbit mAb (A9075) at a dilution of 1:200 (40x lens). High pressure antigen retrieval was performed with 0.01 M citrate buffer (pH 6.0) prior to IHC staining.



Immunohistochemistry analysis of KHSRP in paraffin-embedded rat colon tissue using KHSRP Rabbit mAb (A9075) at a dilution of 1:200 (40x lens). High pressure antigen retrieval was performed with 0.01 M citrate buffer (pH 6.0) prior to IHC staining.



Immunohistochemistry analysis of KHSRP in paraffin-embedded rat liver tissue using KHSRP Rabbit mAb (A9075) at a dilution of 1:200 (40x lens). High pressure antigen retrieval was performed with 0.01 M citrate buffer (pH 6.0) prior to IHC staining.