

# HSP20/HSPB6 Rabbit mAb

Catalog No.: A9091

Recombinant

1 Publications

## Basic Information

### Observed MW

17kDa

### Calculated MW

17kDa

### Category

Primary antibody

### Applications

WB,IF-P,IHC-P,ELISA

### Cross-Reactivity

Human, Mouse, Rat

### CloneNo number

ARC1787

## Background

This locus encodes a heat shock protein. The encoded protein likely plays a role in smooth muscle relaxation.

## Recommended Dilutions

**WB** 1:500 - 1:1000

**IF-P** 1:50 - 1:200

**IHC-P** 1:50 - 1:200

**ELISA** Recommended starting concentration is 1 µg/mL. Please optimize the concentration based on your specific assay requirements.

## Immunogen Information

### Gene ID

126393

### Swiss Prot

O14558

### Immunogen

Synthetic peptide. This information is considered to be commercially sensitive.

### Synonyms

HEL55; Hsp20; PPP1R91; HSP20/HSPB6

## Contact

☎ | 400-999-6126

✉ | [cn.market@abclonal.com.cn](mailto:cn.market@abclonal.com.cn)

🌐 | [www.abclonal.com.cn](http://www.abclonal.com.cn)

## Product Information

### Source

Rabbit

### Isotype

IgG

### Purification

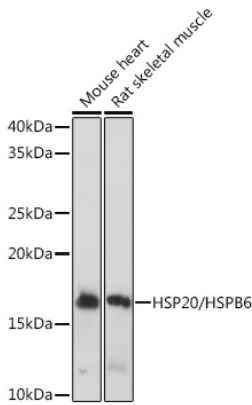
Affinity purification

### Storage

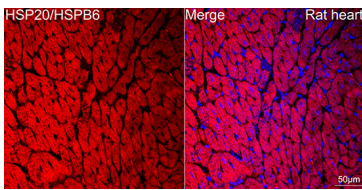
Store at -20°C. Avoid freeze / thaw cycles.

Buffer: PBS containing 50% glycerol and 0.05% BSA, preserved with proclin300 or sodium azide (as specified on the Certificate of Analysis), pH 7.3.

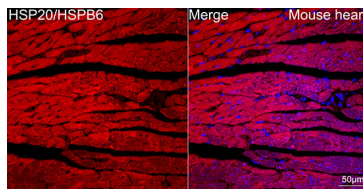
## Validation Data



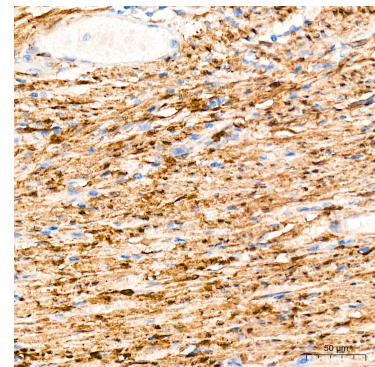
Western blot analysis of various lysates using HSP20/HSPB6 Rabbit mAb (A9091) at 1:1000 dilution. Secondary antibody: HRP-conjugated Goat anti-Rabbit IgG (H+L) (AS014) at 1:10000 dilution. Lysates/proteins: 25µg per lane. Blocking buffer: 3% nonfat dry milk in TBST. Detection: ECL Basic Kit (RM00020). Exposure time: 1s.



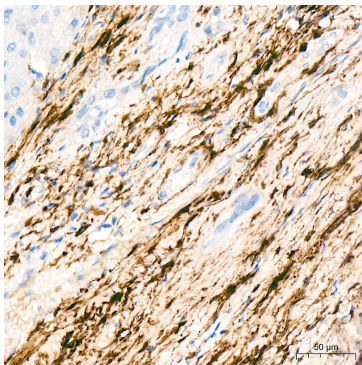
Confocal imaging of paraffin-embedded Rat heart tissue using HSP20/HSPB6 Rabbit mAb (A9091, dilution 1:200) followed by a further incubation with Cy3 Goat Anti-Rabbit IgG (H+L) (AS007, dilution 1:500) (Red). DAPI was used for nuclear staining (Blue). Objective: 40x. Perform high pressure antigen retrieval with 0.01 M citrate buffer (pH 6.0) prior to IF staining.



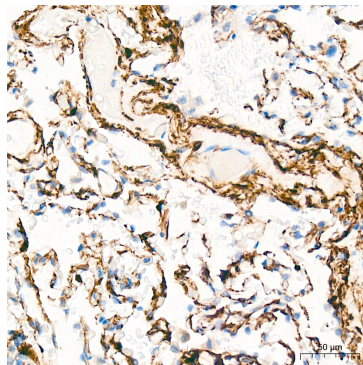
Confocal imaging of paraffin-embedded Mouse heart tissue using HSP20/HSPB6 Rabbit mAb (A9091, dilution 1:200) followed by a further incubation with Cy3 Goat Anti-Rabbit IgG (H+L) (AS007, dilution 1:500) (Red). DAPI was used for nuclear staining (Blue). Objective: 40x. Perform high pressure antigen retrieval with 0.01 M citrate buffer (pH 6.0) prior to IF staining.



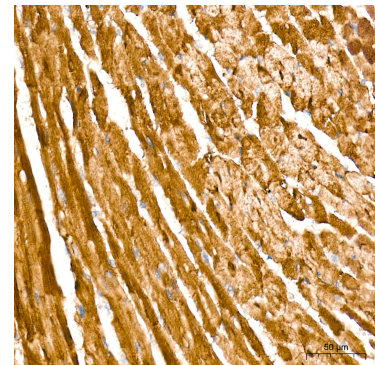
Immunohistochemistry analysis of paraffin-embedded Human colon carcinoma tissue using HSP20/HSPB6 Rabbit mAb (A9091) at a dilution of 1:200 (40x lens). High pressure antigen retrieval was performed with 0.01 M Tris-EDTA buffer (pH 9.0) prior to IHC staining.



Immunohistochemistry analysis of paraffin-embedded Human liver cancer tissue using HSP20/HSPB6 Rabbit mAb (A9091) at a dilution of 1:200 (40x lens). High pressure antigen retrieval was performed with 0.01 M Tris-EDTA buffer (pH 9.0) prior to IHC staining.



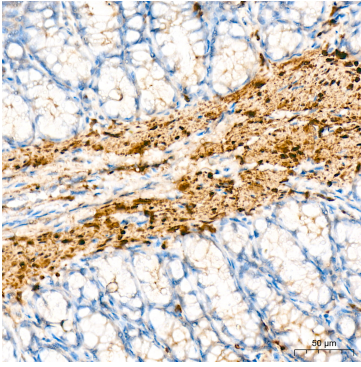
Immunohistochemistry analysis of paraffin-embedded Human lung tissue using HSP20/HSPB6 Rabbit mAb (A9091) at a dilution of 1:200 (40x lens). High pressure antigen retrieval was performed with 0.01 M Tris-EDTA buffer (pH 9.0) prior to IHC staining.



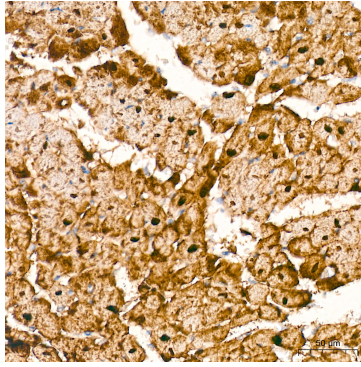
Immunohistochemistry analysis of paraffin-embedded Mouse heart tissue using HSP20/HSPB6 Rabbit mAb (A9091) at a dilution of 1:200 (40x lens). High pressure antigen retrieval was performed with 0.01 M Tris-EDTA buffer (pH 9.0) prior to IHC staining.

## Validation Data

---



Immunohistochemistry analysis of paraffin-embedded Rat colon tissue using HSP20/HSPB6 Rabbit mAb (A9091) at a dilution of 1:200 (40x lens). High pressure antigen retrieval was performed with 0.01 M Tris-EDTA buffer (pH 9.0) prior to IHC staining.



Immunohistochemistry analysis of paraffin-embedded Rat heart tissue using HSP20/HSPB6 Rabbit mAb (A9091) at a dilution of 1:200 (40x lens). High pressure antigen retrieval was performed with 0.01 M Tris-EDTA buffer (pH 9.0) prior to IHC staining.