

EPB41L2 Rabbit pAb

Catalog No.: A9101

Basic Information

Observed MW

180kDa

Calculated MW

113kDa

Category

Primary antibody

Applications

ELISA, WB, IF/ICC

Cross-Reactivity

Human

Background

Predicted to enable PH domain binding activity; cytoskeletal protein binding activity; and structural molecule activity. Involved in positive regulation of protein localization to cell cortex. Located in cell junction; nucleoplasm; and plasma membrane. Colocalizes with COP9 signalosome.

Recommended Dilutions

WB 1:200 - 1:2000

IF/ICC 1:50 - 1:200

Immunogen Information

Gene ID

2037

Swiss Prot

O43491

Immunogen

Recombinant fusion protein containing a sequence corresponding to amino acids 1-210 of human EPB41L2 (NP_001186317.1).

Synonyms

4.1G; 4.1-G; EPB41L2

Contact

☎ | 400-999-6126

✉ | cn.market@abclonal.com.cn

🌐 | www.abclonal.com.cn

Product Information

Source

Rabbit

Isotype

IgG

Purification

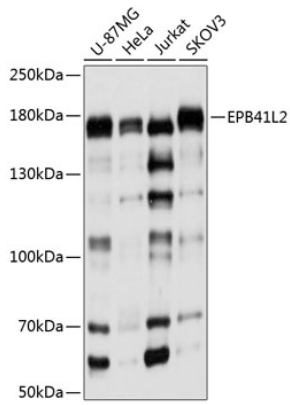
Affinity purification

Storage

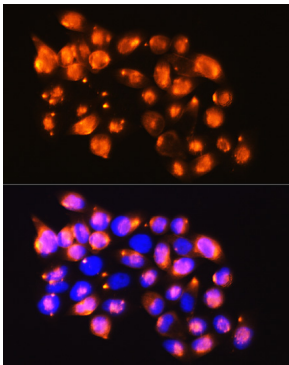
Store at -20°C. Avoid freeze / thaw cycles.

Buffer: PBS with 0.01% thimerosal, 50% glycerol, pH7.3.

Validation Data



Western blot analysis of various lysates using EPB41L2 Rabbit pAb (A9101) at 1:1000 dilution. Secondary antibody: HRP Goat Anti-Rabbit IgG (H+L) (AS014) at 1:10000 dilution. Lysates/proteins: 25µg per lane. Blocking buffer: 3% nonfat dry milk in TBST. Detection: ECL Basic Kit (RM00020). Exposure time: 5s.



Immunofluorescence analysis of HeLa cells using EPB41L2 Rabbit pAb (A9101) at dilution of 1:100. Blue: DAPI for nuclear staining.