

14-3-3 beta/zeta Rabbit mAb

Catalog No.: A9152 **Recombinant**

Basic Information

Observed MW

28kDa

Calculated MW

28kDa

Category

Primary antibody

Applications

ELISA,WB,IF/ICC

Cross-Reactivity

Human, Mouse, Rat

CloneNo number

ARC1454

Background

This gene encodes a protein belonging to the 14-3-3 family of proteins, members of which mediate signal transduction by binding to phosphoserine-containing proteins. This highly conserved protein family is found in both plants and mammals. The encoded protein has been shown to interact with RAF1 and CDC25 phosphatases, suggesting that it may play a role in linking mitogenic signaling and the cell cycle machinery. Two transcript variants, which encode the same protein, have been identified for this gene. [provided by RefSeq, Jul 2008]

Recommended Dilutions

WB	1:500 - 1:1000
IF/ICC	1:50 - 1:200

Immunogen Information

Gene ID

7529/7534

Swiss Prot

P31946/P63104

Immunogen

A synthetic peptide corresponding to a sequence within amino acids 1-100 of human 14-3-3 beta/zeta (P31946).

Synonyms

GW128; HEL-S-1; HS1; KCIP-1; YWHAA; 14-3-3; 14-3-3 beta/zeta

Contact

☎ | 400-999-6126

✉ | cn.market@abclonal.com.cn

🌐 | www.abclonal.com.cn

Product Information

Source

Rabbit

Isotype

IgG

Purification

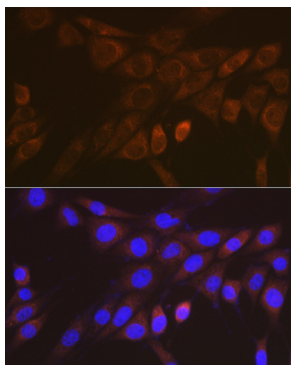
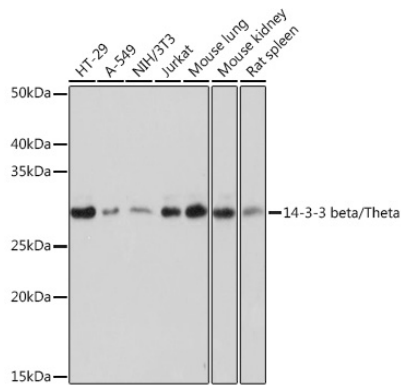
Affinity purification

Storage

Store at -20°C. Avoid freeze / thaw cycles.

Buffer: PBS with 0.02% sodium azide,0.05% BSA,50% glycerol,pH7.3.

Validation Data



Immunofluorescence analysis of NIH-3T3 cells using 14-3-3 beta/zeta Rabbit mAb (A9152) at dilution of 1:100 (40x lens). Blue: DAPI for nuclear staining.