

NUP160 Rabbit pAb

Catalog No.: A9161

Basic Information

Observed MW

160kDa

Calculated MW

162kDa

Category

Primary antibody

Applications

ELISA, WB

Cross-Reactivity

Human

Background

A structural constituent of nuclear pore. Involved in mRNA export from nucleus and nephron development. Part of nuclear pore outer ring. Colocalizes with kinetochore. Implicated in nephrotic syndrome type 19.

Recommended Dilutions

WB 1:500 - 1:1000

Immunogen Information

Gene ID

23279

Swiss Prot

Q12769

Immunogen

Recombinant fusion protein containing a sequence corresponding to amino acids 40-150 of human NUP160 (NP_056046.1).

Synonyms

NPHS19; NUP160

Contact

 | 400-999-6126

 | cn.market@abclonal.com.cn

 | www.abclonal.com.cn

Product Information

Source

Rabbit

Isotype

IgG

Purification

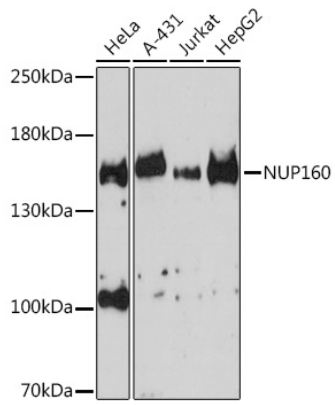
Affinity purification

Storage

Store at -20°C. Avoid freeze / thaw cycles.

Buffer: PBS with 0.01% thimerosal, 50% glycerol, pH7.3.

Validation Data



Western blot analysis of various lysates using NUP160 Rabbit pAb (A9161) at 1:3000 dilution.
Secondary antibody: HRP Goat Anti-Rabbit IgG (H+L) (AS014) at 1:10000 dilution.
Lysates/proteins: 25µg per lane.
Blocking buffer: 3% nonfat dry milk in TBST.
Detection: ECL Enhanced Kit (RM00021).
Exposure time: 180s.