

HMGB2 Rabbit mAb

Catalog No.: A9168

Recombinant

2 Publications

Basic Information

Observed MW

24 kDa

Calculated MW

24 kDa

Category

Primary antibody

Applications

WB, IHC-P, IF/ICC, IP, ELISA, ChIP, CUT&Tag

Cross-Reactivity

Human, Mouse, Rat

CloneNo number

ARC1460

Background

This gene encodes a member of the non-histone chromosomal high mobility group protein family. The proteins of this family are chromatin-associated and ubiquitously distributed in the nucleus of higher eukaryotic cells. In vitro studies have demonstrated that this protein is able to efficiently bend DNA and form DNA circles. These studies suggest a role in facilitating cooperative interactions between cis-acting proteins by promoting DNA flexibility. This protein was also reported to be involved in the final ligation step in DNA end-joining processes of DNA double-strand breaks repair and V(D)J recombination.

Recommended Dilutions

WB 1:1000 - 1:6000**IHC-P** 1:200 - 1:2000**IF/ICC** 1:100 - 1:1000**IP** 0.5µg-4µg antibody for
200µg-400µg extracts of
whole cells**ELISA** Recommended starting
concentration is 1 µg/mL.
Please optimize the
concentration based on
your specific assay
requirements.**ChIP** 5µg antibody for
10µg-15µg of Chromatin**CUT&Tag** 10⁵ cells /1 µg

Immunogen Information

Gene ID

3148

Swiss Prot

P26583

Immunogen

Synthetic peptide. This information is considered to be commercially sensitive.

Synonyms

HMG2; HMGB2

Product Information

Source

Rabbit

Isotype

IgG

Purification

Affinity purification

Storage

Store at -20°C. Avoid freeze / thaw cycles.

Buffer: PBS containing 50% glycerol and 0.05% BSA, preserved with proclin300 or sodium azide (as specified on the Certificate of Analysis), pH 7.3.

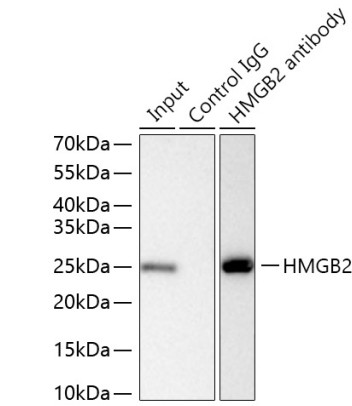
Contact

☎ | 400-999-6126

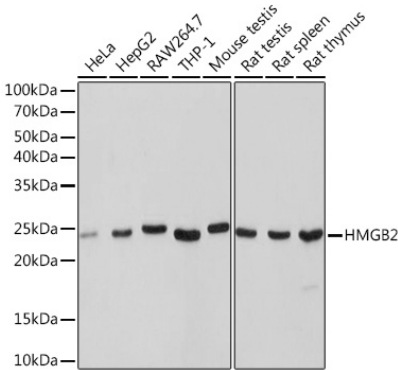
✉ | cn.market@abclonal.com.cn

🌐 | www.abclonal.com.cn

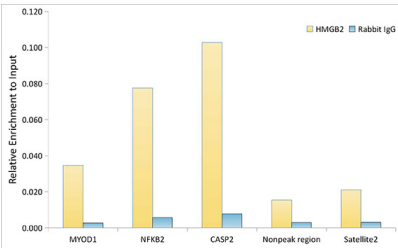
Validation Data



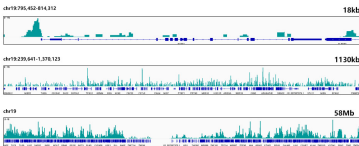
Immunoprecipitation of HMGB2 from 400 µg extracts of THP-1 cells was performed using 2 µg of HMGB2 Rabbit mAb (A9168). Rabbit Control IgG (AC005) was used to precipitate the Control IgG sample. IP samples were eluted with 1x Laemmli Buffer. The Input lane represents 10% of the total input. Western blot analysis of immunoprecipitates was conducted using HMGB2 Rabbit mAb (A9168) at a dilution of 1:1000.



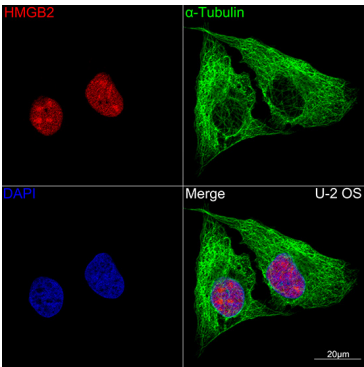
Western blot analysis of various lysates using HMGB2 Rabbit mAb (A9168) at 1:1000 dilution. Secondary antibody: HRP-conjugated Goat anti-Rabbit IgG (H+L) (AS014) at 1:10000 dilution. Lysates/proteins: 25µg per lane. Blocking buffer: 3% nonfat dry milk in TBST. Detection: ECL Basic Kit (RM00020). Exposure time: 1s.



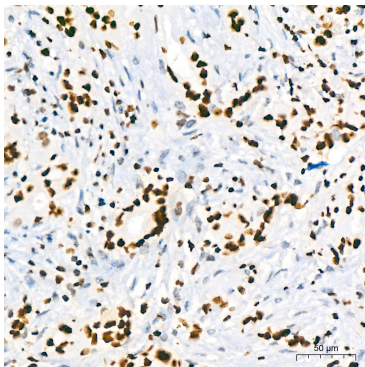
Chromatin immunoprecipitation analysis of extracts from HepG2 cells, using HMGB2 Rabbit mAb (A9168) and rabbit IgG. The amount of immunoprecipitated DNA was checked by quantitative PCR. Histogram was constructed by the ratios of the immunoprecipitated DNA to the input.



CUT&Tag was performed using the CUT&Tag Assay Kit (pAG-Tn5) for Illumina(RK20265)



Confocal imaging of U-2 OS cells using HMGB2 Rabbit mAb (A9168,dilution



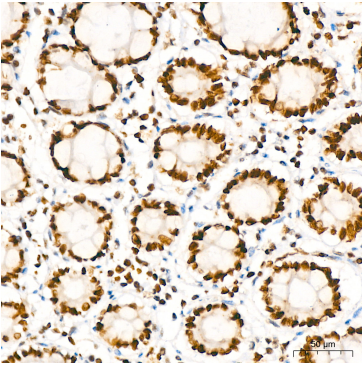
Immunohistochemistry analysis of paraffin-embedded Human breast cancer using

Validation Data

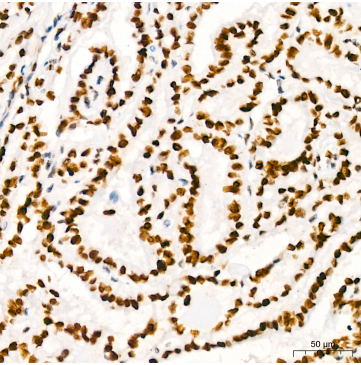
from 10⁵ K562 cells with 1µg HMGB2 Rabbit mAb(A9168), along with a Goat Anti-Rabbit IgG(H+L). The CUT&Tag results indicate the enrichment pattern of HMGB2 in representative gene loci (PTBP1), as shown in figure.

1:100)(Red). The cells were counterstained with α-Tubulin Mouse mAb (AC012,dilution 1:400) (Green). DAPI was used for nuclear staining (blue). Objective: 100x.

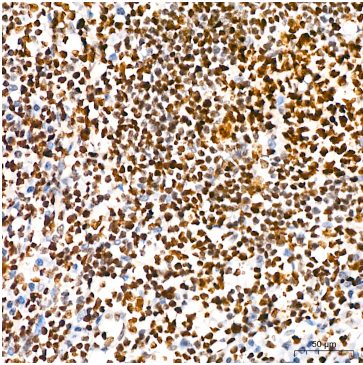
HMGB2 Rabbit mAb (A9168) at dilution of 1:200 (40x lens). High pressure antigen retrieval performed with 0.01M Tris/EDTA Buffer (pH 9.0) prior to IHC staining.



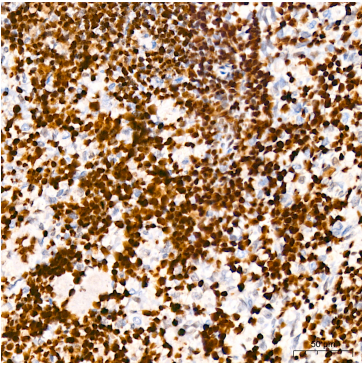
Immunohistochemistry analysis of paraffin-embedded Human colon using HMGB2 Rabbit mAb (A9168) at dilution of 1:200 (40x lens). High pressure antigen retrieval performed with 0.01M Tris/EDTA Buffer (pH 9.0) prior to IHC staining.



Immunohistochemistry analysis of paraffin-embedded Human thyroid cancer using HMGB2 Rabbit mAb (A9168) at dilution of 1:200 (40x lens). High pressure antigen retrieval performed with 0.01M Tris/EDTA Buffer (pH 9.0) prior to IHC staining.



Immunohistochemistry analysis of paraffin-embedded Human tonsil using HMGB2 Rabbit mAb (A9168) at dilution of 1:200 (40x lens). High pressure antigen retrieval performed with 0.01M Tris/EDTA Buffer (pH 9.0) prior to IHC staining.



Immunohistochemistry analysis of paraffin-embedded Rat spleen using HMGB2 Rabbit mAb (A9168) at dilution of 1:200 (40x lens). High pressure antigen retrieval performed with 0.01M Tris/EDTA Buffer (pH 9.0) prior to IHC staining.