

FGFR4 Rabbit mAb

Catalog No.: A9197 **Recombinant** **5 Publications**

Basic Information

Observed MW

95 kDa/125 kDa

Calculated MW

88 kDa

Category

Primary antibody

Applications

WB,Auto WB,ELISA

Cross-Reactivity

Human, Mouse, Rat

CloneNo number

ARC1474

Background

The protein encoded by this gene is a tyrosine kinase and cell surface receptor for fibroblast growth factors. The encoded protein is involved in the regulation of several pathways, including cell proliferation, cell differentiation, cell migration, lipid metabolism, bile acid biosynthesis, vitamin D metabolism, glucose uptake, and phosphate homeostasis. This protein consists of an extracellular region, composed of three immunoglobulin-like domains, a single hydrophobic membrane-spanning segment, and a cytoplasmic tyrosine kinase domain. The extracellular portion interacts with fibroblast growth factors, setting in motion a cascade of downstream signals, ultimately influencing mitogenesis and differentiation.

Recommended Dilutions

WB 1:500 - 1:2000

Auto WB 1:100 - 1:500

ELISA Recommended starting concentration is 1 µg/mL. Please optimize the concentration based on your specific assay requirements.

Immunogen Information

Gene ID

2264

Swiss Prot

P22455

Immunogen

Synthetic peptide. This information is considered to be commercially sensitive.

Synonyms

TKF; JTK2; CD334; FGFR4

Contact

☎ | 400-999-6126

✉ | cn.market@abclonal.com.cn

🌐 | www.abclonal.com.cn

Product Information

Source

Rabbit

Isotype

IgG

Purification

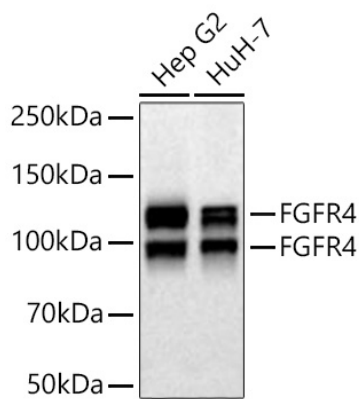
Affinity purification

Storage

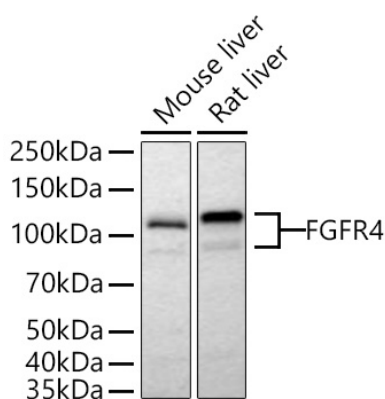
Store at -20°C. Avoid freeze / thaw cycles.

Buffer: PBS containing 50% glycerol and 0.05% BSA, preserved with proclin300 or sodium azide (as specified on the Certificate of Analysis), pH 7.3.

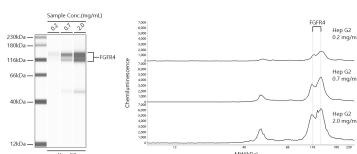
Validation Data



Western blot analysis of various lysates using FGFR4 Rabbit mAb (A9197) at 1:1000 dilution incubated at room temperature for 1.5 hours.
 Secondary antibody: Goat anti-Rabbit IgG (H+L) (AS014) at 1:10000 dilution.
 Lysates/proteins: 25 µg per lane.
 Blocking buffer: 3% nonfat dry milk in TBST.
 Detection: ECL Basic Kit (RM00020).
 Exposure time: 60 s.



Western blot analysis of various lysates using FGFR4 Rabbit mAb (A9197) at 1:1000 dilution incubated at room temperature for 1.5 hours.
 Secondary antibody: HRP-conjugated Goat anti-Rabbit IgG (H+L) (AS014) at 1:10000 dilution.
 Lysates/proteins: 25 µg per lane.
 Blocking buffer: 3% nonfat dry milk in TBST.
 Detection: ECL Basic Kit (RM00020).
 Exposure time: 90 s.



Simple Western™ analysis of lysates from Hep G2 cells using FGFR4 Rabbit mAb (A9197) at 1:100 dilution. The virtual lane view (left) shows the target band (as indicated) with samples in concentrations of 0.2 mg/mL, 0.7 mg/mL and 2.0 mg/mL. The corresponding electropherogram view (right) plots chemiluminescence intensity against molecular weight along the capillary for sample concentrations of 0.2 mg/mL, 0.7 mg/mL and 2.0 mg/mL. This experiment was performed under reducing conditions on the Jess™ Simple Western instrument from ProteinSimple, a BioTechne brand, using the 12-230 kDa separation module.