

METTL5 Rabbit pAb

Catalog No.: A9217 **1 Publications**

Basic Information

Observed MW

24kDa

Calculated MW

24kDa

Category

Primary antibody

Applications

WB, ELISA

Cross-Reactivity

Human, Mouse, Rat

Background

Enables S-adenosyl-L-methionine binding activity and rRNA (adenine-N6-)-methyltransferase activity. Involved in positive regulation of translation and rRNA methylation. Located in nucleus; postsynapse; and presynapse. Implicated in autosomal recessive intellectual developmental disorder-72.

Recommended Dilutions

WB 1:500 - 1:2000

ELISA Recommended starting concentration is 1 µg/mL. Please optimize the concentration based on your specific assay requirements.

Immunogen Information

Gene ID

29081

Swiss Prot

Q9NRN9

Immunogen

Recombinant protein (or fragment). This information is considered to be commercially sensitive.

Synonyms

MRT72; HSPC133; METTL5

Contact

 | 400-999-6126

 | cn.market@abclonal.com.cn

 | www.abclonal.com.cn

Product Information

Source

Rabbit

Isotype

IgG

Purification

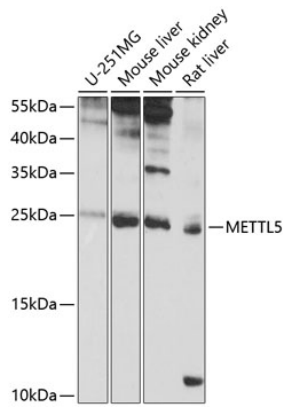
Affinity purification

Storage

Store at -20°C. Avoid freeze / thaw cycles.

Buffer: PBS containing 50% glycerol, preserved with proclin300 or sodium azide (as specified on the Certificate of Analysis), pH 7.3.

Validation Data



Western blot analysis of various lysates using METTL5 Rabbit pAb (A9217) at 1:1000 dilution.
Secondary antibody: HRP-conjugated Goat anti-Rabbit IgG (H+L) (AS014) at 1:10000 dilution.
Lysates/proteins: 25µg per lane.
Blocking buffer: 3% nonfat dry milk in TBST.
Detection: ECL Basic Kit (RM00020).
Exposure time: 8s.