

SETD7 Rabbit mAb

Catalog No.: A9225 **Recombinant** **1 Publications**

Basic Information

Observed MW

48kDa

Calculated MW

41kDa

Category

Primary antibody

Applications

ELISA, WB

Cross-Reactivity

Human, Mouse, Rat

CloneNo number

ARC1483

Background

Enables histone-lysine N-methyltransferase activity and p53 binding activity. Involved in peptidyl-lysine dimethylation and peptidyl-lysine monomethylation. Acts upstream of or within cellular response to DNA damage stimulus and heterochromatin organization. Located in chromosome and nucleolus.

Recommended Dilutions

WB 1:500 - 1:1000

Immunogen Information

Gene ID

80854

Swiss Prot

Q8WTS6

Immunogen

A synthetic peptide corresponding to a sequence within amino acids 1-100 of human SETD7 (Q8WTS6).

Synonyms

KMT7; SET7; SET9; SET7/9; SETD7

Contact

 | 400-999-6126

 | cn.market@abclonal.com.cn

 | www.abclonal.com.cn

Product Information

Source

Rabbit

Isotype

IgG

Purification

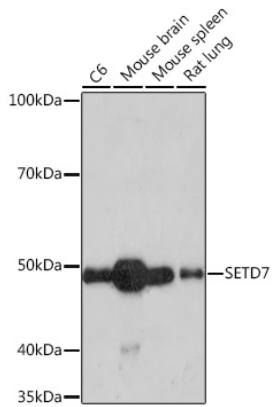
Affinity purification

Storage

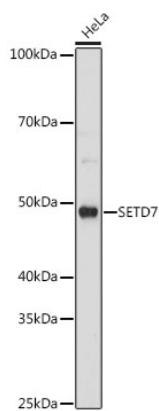
Store at -20°C. Avoid freeze / thaw cycles.

Buffer: PBS with 0.02% sodium azide, 0.05% BSA, 50% glycerol, pH7.3.

Validation Data



Western blot analysis of various lysates using SETD7 Rabbit mAb (A9225) at 1:1000 dilution.
Secondary antibody: HRP Goat Anti-Rabbit IgG (H+L) (AS014) at 1:10000 dilution.
Lysates/proteins: 25µg per lane.
Blocking buffer: 3% nonfat dry milk in TBST.
Detection: ECL Enhanced Kit (RM00021).
Exposure time: 3min.



Western blot analysis of lysates from HeLa cells, using SETD7 Rabbit mAb (A9225) at 1:1000 dilution.
Secondary antibody: HRP Goat Anti-Rabbit IgG (H+L) (AS014) at 1:10000 dilution.
Lysates/proteins: 25µg per lane.
Blocking buffer: 3% nonfat dry milk in TBST.
Detection: ECL Basic Kit (RM00020).
Exposure time: 180s.