

# Lipoprotein lipase (LPL) Rabbit pAb

Catalog No.: A9228

1 Publications

## Basic Information

### Observed MW

53kDa

### Calculated MW

53kDa

### Category

Primary antibody

### Applications

WB,FC

### Cross-Reactivity

Human

## Background

LPL encodes lipoprotein lipase, which is expressed in heart, muscle, and adipose tissue. LPL functions as a homodimer, and has the dual functions of triglyceride hydrolase and ligand/bridging factor for receptor-mediated lipoprotein uptake. Severe mutations that cause LPL deficiency result in type I hyperlipoproteinemia, while less extreme mutations in LPL are linked to many disorders of lipoprotein metabolism.

## Recommended Dilutions

WB 1:200 - 1:1000

FC 1:20 - 1:50

## Immunogen Information

### Gene ID

4023

### Swiss Prot

P06858

### Immunogen

A synthetic peptide of human Lipoprotein lipase (Lipoprotein lipase (LPL))

### Synonyms

LIPD; HDLCQ11; Lipoprotein lipase (LPL)

## Contact

☎ | 400-999-6126

✉ | [cn.market@abclonal.com.cn](mailto:cn.market@abclonal.com.cn)

🌐 | [www.abclonal.com.cn](http://www.abclonal.com.cn)

## Product Information

### Source

Rabbit

### Isotype

IgG

### Purification

Affinity purification

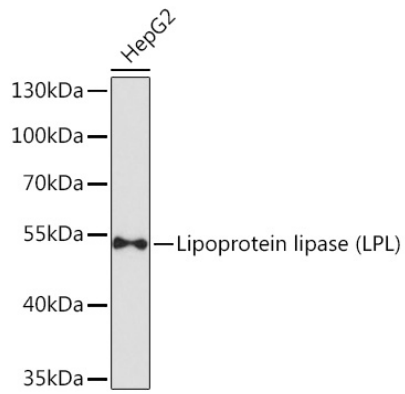
### Storage

Store at 4°C. Avoid freeze / thaw cycles.

Buffer: PBS with 0.02% sodium azide, pH7.3.

## Validation Data

---



Western blot analysis of extracts of HepG2 cells, using Lipoprotein lipase (Lipoprotein lipase (LPL)) antibody (A9228) at 1:1000 dilution.  
Secondary antibody: HRP Goat Anti-Rabbit IgG (H+L) (AS014) at 1:10000 dilution.  
Lysates/proteins: 25µg per lane.  
Blocking buffer: 3% nonfat dry milk in TBST.  
Detection: ECL Basic Kit (RM00020).  
Exposure time: 90s.