

PIM2 Rabbit mAb

Catalog No.: A9230

Recombinant

1 Publications

Basic Information

Observed MW

34kDa

Calculated MW

34kDa

Category

Primary antibody

Applications

ELISA, WB, IP

Cross-Reactivity

Human, Mouse, Rat

CloneNo number

ARC2497

Background

This gene encodes a protooncogene that acts as a serine/threonine protein kinase. Studies determined the encoded protein functions to prevent apoptosis and to promote cell survival.

Recommended Dilutions

WB 1:500 - 1:1000

IP 0.5µg-4µg antibody for
200µg-400µg extracts of
whole cells

Immunogen Information

Gene ID

11040

Swiss Prot

Q9P1W9

Immunogen

Recombinant fusion protein containing a sequence corresponding to amino acids 10-120 of human PIM2 (NP_006866.2).

Synonyms

PIM2; serine/threonine-protein kinase pim-2

Contact

☎ | 400-999-6126

✉ | cn.market@abclonal.com.cn

🌐 | www.abclonal.com.cn

Product Information

Source

Rabbit

Isotype

IgG

Purification

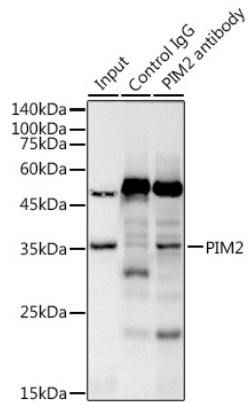
Affinity purification

Storage

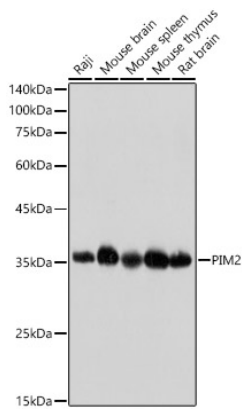
Store at -20°C. Avoid freeze / thaw cycles.

Buffer: PBS with 0.02% sodium azide, 0.05% BSA, 50% glycerol, pH7.3.

Validation Data



Immunoprecipitation analysis of 300 μ g extracts of Raji cells using 3 μ g PIM2 antibody (A9230). Western blot was performed from the immunoprecipitate using PIM2 antibody (A9230) at a dilution of 1:1000.



Western blot analysis of various lysates, using PIM2 Rabbit mAb (A9230) at 1:1000 dilution. Secondary antibody: HRP Goat Anti-Rabbit IgG (H+L) (AS014) at 1:10000 dilution. Lysates/proteins: 25 μ g per lane. Blocking buffer: 3% nonfat dry milk in TBST. Detection: ECL Basic Kit (RM00020). Exposure time: 5s.