

# TBC1D23 Rabbit pAb

Catalog No.: A9232

## Basic Information

### Observed MW

78kDa

### Calculated MW

78kDa

### Category

Primary antibody

### Applications

ELISA, WB

### Cross-Reactivity

Human, Mouse

## Background

Involved in brain development; retrograde transport, endosome to Golgi; and vesicle tethering to Golgi. Located in cytoplasmic vesicle and trans-Golgi network. Colocalizes with WASH complex. Implicated in pontocerebellar hypoplasia.

## Recommended Dilutions

WB 1:500 - 1:2000

## Immunogen Information

### Gene ID

55773

### Swiss Prot

Q9NUY8

### Immunogen

Recombinant fusion protein containing a sequence corresponding to amino acids 250-600 of human TBC1D23 (NP\_001186127.1).

### Synonyms

PCH11; NS4ATP1; TBC1D23

## Contact

 | 400-999-6126

 | [cn.market@abclonal.com.cn](mailto:cn.market@abclonal.com.cn)

 | [www.abclonal.com.cn](http://www.abclonal.com.cn)

## Product Information

### Source

Rabbit

### Isotype

IgG

### Purification

Affinity purification

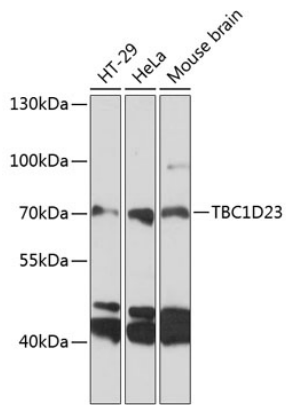
### Storage

Store at -20°C. Avoid freeze / thaw cycles.

Buffer: PBS with 0.01% thimerosal, 50% glycerol, pH7.3.

## Validation Data

---



Western blot analysis of various lysates using TBC1D23 Rabbit pAb (A9232) at 1:3000 dilution.  
Secondary antibody: HRP Goat Anti-Rabbit IgG (H+L) (AS014) at 1:10000 dilution.  
Lysates/proteins: 25 $\mu$ g per lane.  
Blocking buffer: 3% nonfat dry milk in TBST.  
Detection: ECL Basic Kit (RM00020).  
Exposure time: 60s.