

# CPSF2 Rabbit pAb

Catalog No.: A9297 **1 Publications**

## Basic Information

### Observed MW

110kDa

### Calculated MW

88kDa

### Category

Primary antibody

### Applications

ELISA, WB

### Cross-Reactivity

Human, Mouse, Rat

## Background

Predicted to enable RNA binding activity. Involved in mRNA 3'-end processing by stem-loop binding activity and cleavage. Located in membrane. Part of mRNA cleavage and polyadenylation specificity factor complex.

## Recommended Dilutions

WB 1:1000 - 1:2000

## Immunogen Information

### Gene ID

53981

### Swiss Prot

Q9P210

### Immunogen

Recombinant fusion protein containing a sequence corresponding to amino acids 450-700 of human CPSF2 (NP\_059133.1).

### Synonyms

CPSF100; CPSF2

## Contact

 | 400-999-6126

 | [cn.market@abclonal.com.cn](mailto:cn.market@abclonal.com.cn)

 | [www.abclonal.com.cn](http://www.abclonal.com.cn)

## Product Information

### Source

Rabbit

### Isotype

IgG

### Purification

Affinity purification

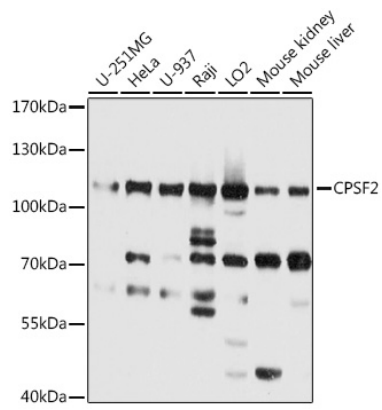
### Storage

Store at -20°C. Avoid freeze / thaw cycles.

Buffer: PBS with 0.01% thimerosal, 50% glycerol, pH7.3.

## Validation Data

---



Western blot analysis of various lysates using CPSF2 Rabbit pAb (A9297) at 1:2000 dilution.  
Secondary antibody: HRP Goat Anti-Rabbit IgG (H+L) (AS014) at 1:10000 dilution.  
Lysates/proteins: 25µg per lane.  
Blocking buffer: 3% nonfat dry milk in TBST.  
Detection: ECL Basic Kit (RM00020).  
Exposure time: 3s.