

# Casein Kinase 1 alpha (CSNK1A1) Rabbit mAb

Catalog No.: A9308

Recombinant

1 Publications

## Basic Information

### Observed MW

35kDa

### Calculated MW

39kDa

### Category

Primary antibody

### Applications

ELISA, WB, IHC-P, IF/ICC

### Cross-Reactivity

Human, Mouse, Rat

### CloneNo number

ARC1860

## Background

Enables protein serine/threonine kinase activity. Involved in several processes, including negative regulation of canonical Wnt signaling pathway; peptidyl-serine phosphorylation; and positive regulation of proteasomal ubiquitin-dependent protein catabolic process. Located in centrosome; cytosol; and nuclear speck. Part of beta-catenin destruction complex. Colocalizes with keratin filament and mRNA cleavage and polyadenylation specificity factor complex. Biomarker of Alzheimer's disease and inclusion body myositis.

## Recommended Dilutions

|        |                |
|--------|----------------|
| WB     | 1:500 - 1:2000 |
| IHC-P  | 1:50 - 1:200   |
| IF/ICC | 1:50 - 1:200   |

## Immunogen Information

### Gene ID

1452

### Swiss Prot

P48729

### Immunogen

A synthetic peptide corresponding to a sequence within amino acids 238-337 of human Casein Kinase 1 alpha (CSNK1A1) (P48729).

### Synonyms

CK1; CK1a; CKIa; HLCDGP1; PRO2975; HEL-S-77p; Casein Kinase 1 alpha (CSNK1A1)

## Contact

☎ | 400-999-6126

✉ | [cn.market@abclonal.com.cn](mailto:cn.market@abclonal.com.cn)

🌐 | [www.abclonal.com.cn](http://www.abclonal.com.cn)

## Product Information

### Source

Rabbit

### Isotype

IgG

### Purification

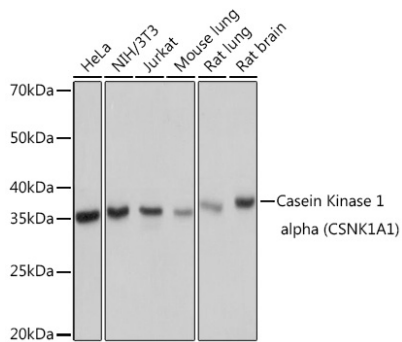
Affinity purification

### Storage

Store at -20°C. Avoid freeze / thaw cycles.

Buffer: PBS with 0.02% sodium azide, 0.05% BSA, 50% glycerol, pH7.3.

## Validation Data



Western blot analysis of various lysates using Casein Kinase 1 alpha (CSNK1A1) Rabbit mAb (A9308) at 1:1000 dilution.

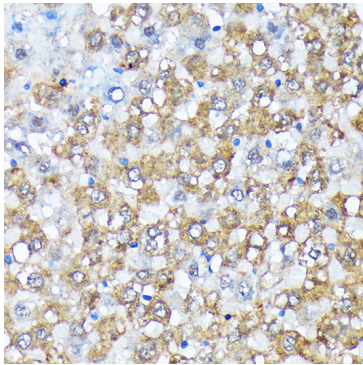
Secondary antibody: HRP Goat Anti-Rabbit IgG (H+L) (AS014) at 1:10000 dilution.

Lysates/proteins: 25µg per lane.

Blocking buffer: 3% nonfat dry milk in TBST.

Detection: ECL Basic Kit (RM00020).

Exposure time: 1s.



Immunohistochemistry analysis of paraffin-embedded Rat liver using Casein Kinase 1 alpha (CSNK1A1) Rabbit mAb (A9308) at dilution of 1:100 (40x lens). Perform microwave antigen retrieval with 10 mM Tris/EDTA buffer pH 9.0 before commencing with IHC staining protocol.