

CRYGC Rabbit pAb

Catalog No.: A9324

Basic Information

Observed MW

17kDa

Calculated MW

21kDa

Category

Primary antibody

Applications

ELISA, WB, IF/ICC

Cross-Reactivity

Human, Mouse, Rat

Background

This gene encodes a member of the beta/gamma-crystallin family of proteins. Crystallins constitute the major proteins of vertebrate eye lens and maintain the transparency and refractive index of the lens. This gene and several family members are present in a gene cluster on chromosome 2. Mutations in this gene have been shown to cause multiple types of cataract, including Coppock-like cataract and zonular pulverulent cataract, among others.

Recommended Dilutions

WB 1:1000 - 1:2000

IF/ICC 1:50 - 1:200

Immunogen Information

Gene ID

1420

Swiss Prot

P07315

Immunogen

Recombinant fusion protein containing a sequence corresponding to amino acids 1-174 of human CRYGC (NP_066269.1).

Synonyms

CCL; CRYG3; CTRCT2; CRYGC

Contact

☎ | 400-999-6126

✉ | cn.market@abclonal.com.cn

🌐 | www.abclonal.com.cn

Product Information

Source

Rabbit

Isotype

IgG

Purification

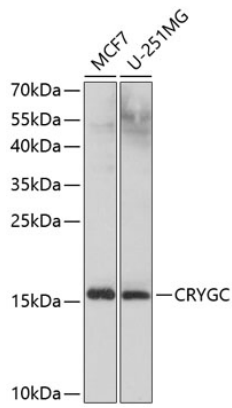
Affinity purification

Storage

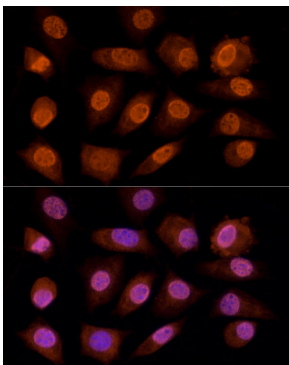
Store at -20°C. Avoid freeze / thaw cycles.

Buffer: PBS with 0.02% sodium azide, 50% glycerol, pH 7.3.

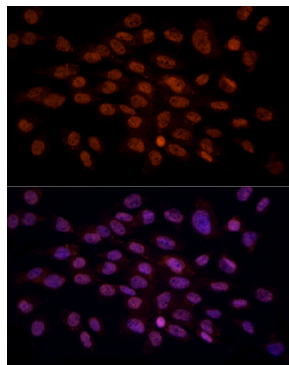
Validation Data



Western blot analysis of extracts of various cell lines, using CRYGC antibody (A9324) at 1:1000 dilution.
Secondary antibody: HRP Goat Anti-Rabbit IgG (H+L) (AS014) at 1:10000 dilution.
Lysates/proteins: 25µg per lane.
Blocking buffer: 3% nonfat dry milk in TBST.
Detection: ECL Basic Kit (RM00020).
Exposure time: 5s.



Immunofluorescence analysis of L929 cells using CRYGC antibody (A9324) at dilution of 1:100 (40x lens). Blue: DAPI for nuclear staining.



Immunofluorescence analysis of C6 cells using CRYGC antibody (A9324) at dilution of 1:100 (40x lens). Blue: DAPI for nuclear staining.