

CAP1 Rabbit mAb

Catalog No.: A9330 **Recombinant**

Basic Information

Observed MW

46kDa

Calculated MW

52kDa

Category

Primary antibody

Applications

ELISA, WB, IHC-P

Cross-Reactivity

Human

CloneNo number

ARC2752

Background

The protein encoded by this gene is related to the *S. cerevisiae* CAP protein, which is involved in the cyclic AMP pathway. The human protein is able to interact with other molecules of the same protein, as well as with CAP2 and actin. Alternatively spliced transcript variants encoding different isoforms have been identified.

Recommended Dilutions

WB 1:100 - 1:500

IHC-P 1:50 - 1:200

Immunogen Information

Gene ID

10487

Swiss Prot

Q01518

Immunogen

A synthetic peptide corresponding to a sequence within amino acids 1-100 of human CAP1 (Q01518).

Synonyms

CAP; CAP1-PEN; CAP1

Contact

☎ | 400-999-6126

✉ | cn.market@abclonal.com.cn

🌐 | www.abclonal.com.cn

Product Information

Source

Rabbit

Isotype

IgG

Purification

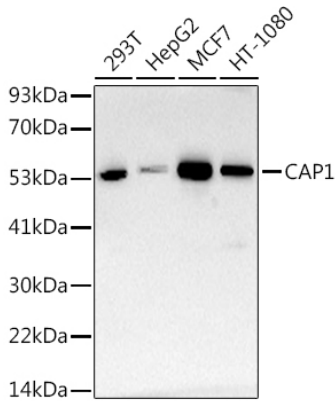
Affinity purification

Storage

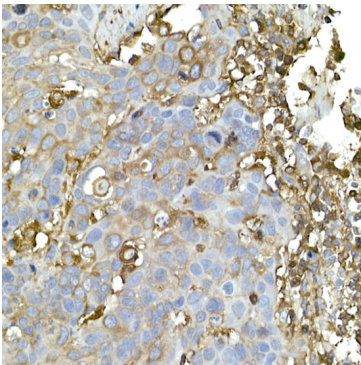
Store at -20°C. Avoid freeze / thaw cycles.

Buffer: PBS with 0.02% sodium azide, 0.05% BSA, 50% glycerol, pH7.3.

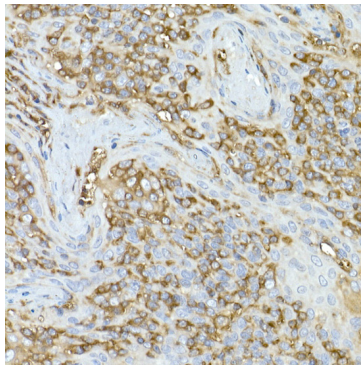
Validation Data



Western blot analysis of various lysates, using CAP1 Rabbit mAb (A9330) at 1:500 dilution. Secondary antibody: HRP Goat Anti-Rabbit IgG (H+L) (AS014) at 1:10000 dilution. Lysates/proteins: 25ug per lane. Blocking buffer: 3% nonfat dry milk in TBST. Detection: ECL Basic Kit (RM00020). Exposure time: 90s.



Immunohistochemistry analysis of paraffin-embedded Human esophageal cancer using CAP1 Rabbit mAb (A9330) at dilution of 1:50 (40x lens). Perform high pressure antigen retrieval with 10 mM citrate buffer pH 6.0 before commencing with IHC staining protocol.



Immunohistochemistry analysis of paraffin-embedded Human tonsil using CAP1 Rabbit mAb (A9330) at dilution of 1:50 (40x lens). Perform high pressure antigen retrieval with 10 mM citrate buffer pH 6.0 before commencing with IHC staining protocol.