

CLPTM1 Rabbit mAb

Catalog No.: A9348 **Recombinant**

Basic Information

Observed MW

100kDa

Calculated MW

76kDa

Category

Primary antibody

Applications

ELISA, WB

Cross-Reactivity

Human

CloneNo number

ARC2720

Background

Predicted to be involved in regulation of T cell differentiation in thymus. Located in membrane.

Recommended Dilutions

WB 1:100 - 1:500

Immunogen Information

Gene ID

1209

Swiss Prot

O96005

Immunogen

A synthetic peptide corresponding to a sequence within amino acids 1-100 of human CLPTM1 (O96005).

Synonyms

CLPTM1; transmembrane protein

Contact

☎ | 400-999-6126

✉ | cn.market@abclonal.com.cn

🌐 | www.abclonal.com.cn

Product Information

Source

Rabbit

Isotype

IgG

Purification

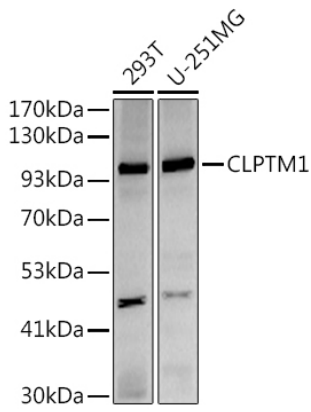
Affinity purification

Storage

Store at -20°C. Avoid freeze / thaw cycles.

Buffer: PBS with 0.02% sodium azide, 0.05% BSA, 50% glycerol, pH7.3.

Validation Data



Western blot analysis of extracts of various cell lines, using (A9348) at 1:500 dilution.
Secondary antibody: HRP Goat Anti-Rabbit IgG (H+L) (AS014) at 1:10000 dilution.
Lysates/proteins: 25µg per lane.
Blocking buffer: 3% nonfat dry milk in TBST.
Detection: ECL Basic Kit (RM00020).
Exposure time: 180s.