

AGL Rabbit mAb

Catalog No.: A9353 **Recombinant**

Basic Information

Observed MW

175kDa

Calculated MW

175kDa

Category

Primary antibody

Applications

ELISA, WB, IF/ICC

Cross-Reactivity

Human, Mouse, Rat

CloneNo number

ARC2741

Background

This gene encodes the glycogen debrancher enzyme which is involved in glycogen degradation. This enzyme has two independent catalytic activities which occur at different sites on the protein: a 4-alpha-glucotransferase activity and a amylo-1,6-glucosidase activity. Mutations in this gene are associated with glycogen storage disease although a wide range of enzymatic and clinical variability occurs which may be due to tissue-specific alternative splicing. Alternatively spliced transcripts encoding different isoforms have been described.

Recommended Dilutions

WB 1:500 - 1:1000**IF/ICC** 1:50 - 1:200

Immunogen Information

Gene ID

178

Swiss Prot

P35573

Immunogen

A synthetic peptide corresponding to a sequence within amino acids 1-100 of human AGL (P35573).

Synonyms

GDE; AGL

Contact

 | 400-999-6126 | cn.market@abclonal.com.cn | www.abclonal.com.cn

Product Information

Source

Rabbit

Isotype

IgG

Purification

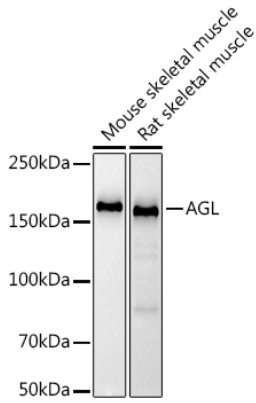
Affinity purification

Storage

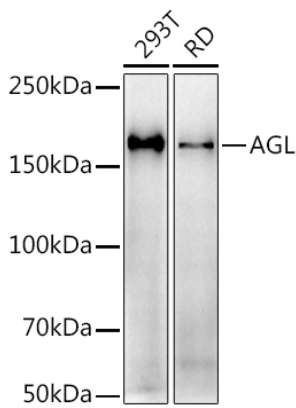
Store at -20°C. Avoid freeze / thaw cycles.

Buffer: PBS with 0.02% sodium azide, 0.05% BSA, 50% glycerol, pH7.3.

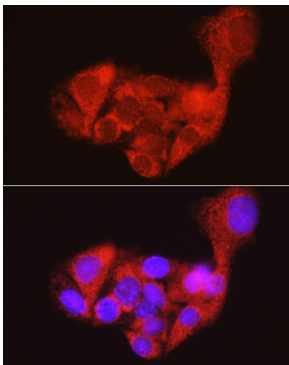
Validation Data



Western blot analysis of extracts of various cell lines, using (A9353) at 1:1000 dilution. Secondary antibody: HRP Goat Anti-Rabbit IgG (H+L) (AS014) at 1:10000 dilution. Lysates/proteins: 25µg per lane. Blocking buffer: 3% nonfat dry milk in TBST. Detection: ECL Basic Kit (RM00020). Exposure time: 30s.



Western blot analysis of extracts of various cell lines, using (A9353) at 1:1000 dilution. Secondary antibody: HRP Goat Anti-Rabbit IgG (H+L) (AS014) at 1:10000 dilution. Lysates/proteins: 25µg per lane. Blocking buffer: 3% nonfat dry milk in TBST. Detection: ECL Enhanced Kit (RM00021). Exposure time: 180s.



Immunofluorescence analysis of HepG2 cells using AGL antibody (A9353) at dilution of 1:100. Blue: DAPI for nuclear staining.