

SAMM50 Rabbit mAb

Catalog No.: A9355 **Recombinant**

Basic Information

Observed MW

52kDa

Calculated MW

52kDa

Category

Primary antibody

Applications

ELISA, WB, IHC-P

Cross-Reactivity

Human, Mouse, Rat

CloneNo number

ARC2784

Background

This gene encodes a component of the Sorting and Assembly Machinery (SAM) of the mitochondrial outer membrane. The Sam complex functions in the assembly of beta-barrel proteins into the outer mitochondrial membrane.

Recommended Dilutions

WB 1:500 - 1:1000

IHC-P 1:100 - 1:500

Immunogen Information

Gene ID

25813

Swiss Prot

Q9Y512

Immunogen

A synthetic peptide corresponding to a sequence within amino acids 300-400 of human SAMM50 (Q9Y512).

Synonyms

OMP85; SAM50; TOB55; TRG-3; CGI-51; YNL026W; SAMM50

Contact

 | 400-999-6126

 | cn.market@abclonal.com.cn

 | www.abclonal.com.cn

Product Information

Source

Rabbit

Isotype

IgG

Purification

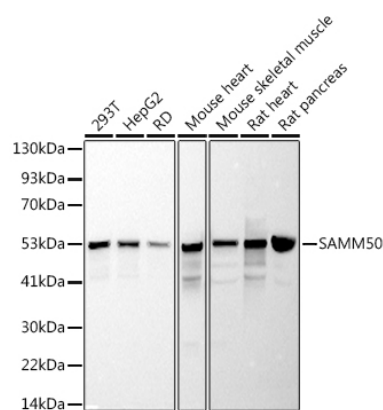
Affinity purification

Storage

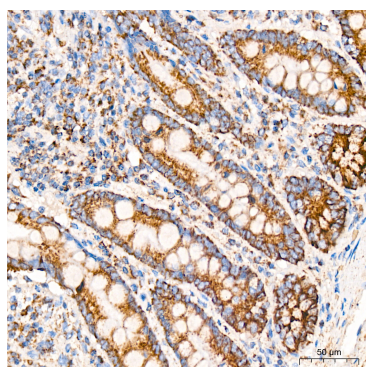
Store at -20°C. Avoid freeze / thaw cycles.

Buffer: PBS with 0.02% sodium azide, 0.05% BSA, 50% glycerol, pH7.3.

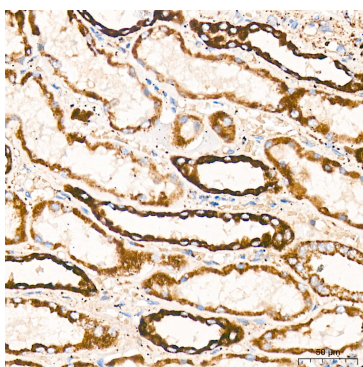
Validation Data



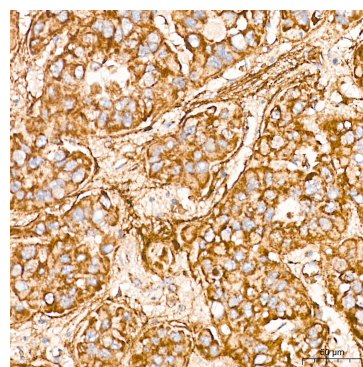
Western blot analysis of various lysates using (A9355) at 1:1000 dilution.
 Secondary antibody: HRP Goat Anti-Rabbit IgG (H+L) (A5014) at 1:10000 dilution.
 Lysates/proteins: 25µg per lane.
 Blocking buffer: 3% nonfat dry milk in TBST.
 Detection: ECL Basic Kit (RM00020).
 Exposure time: 90s.



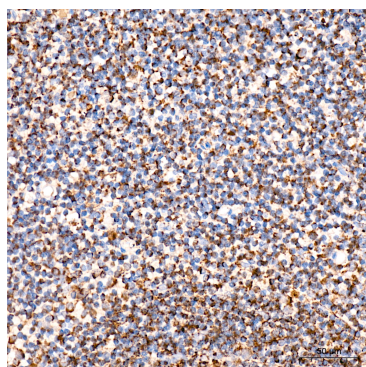
Immunohistochemistry analysis of SMM50 in paraffin-embedded human colon tissue using SMM50 Rabbit mAb (A9355) at a dilution of 1:400 (40x lens). High pressure antigen retrieval was performed with 0.01 M citrate buffer (pH 6.0) prior to IHC staining.



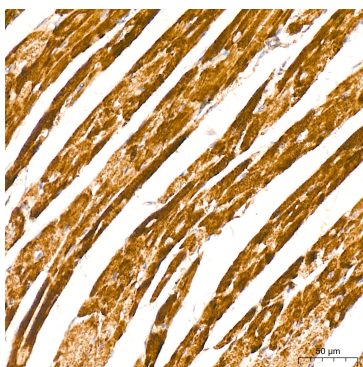
Immunohistochemistry analysis of SMM50 in paraffin-embedded human kidney tissue using SMM50 Rabbit mAb (A9355) at a dilution of 1:400 (40x lens). High pressure antigen retrieval was performed with 0.01 M citrate buffer (pH 6.0) prior to IHC staining.



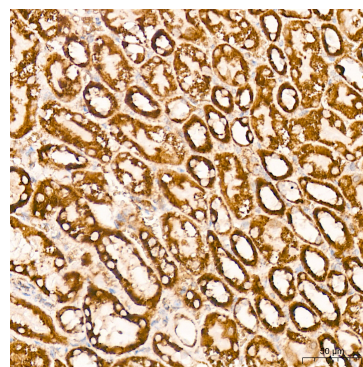
Immunohistochemistry analysis of SMM50 in paraffin-embedded human liver cancer tissue using SMM50 Rabbit mAb (A9355) at a dilution of 1:400 (40x lens). High pressure antigen retrieval was performed with 0.01 M citrate buffer (pH 6.0) prior to IHC staining.



Immunohistochemistry analysis of SMM50 in paraffin-embedded human tonsil tissue using SMM50 Rabbit mAb (A9355) at a dilution of 1:400 (40x lens). High pressure antigen retrieval was performed with 0.01 M citrate buffer (pH 6.0) prior to IHC staining.



Immunohistochemistry analysis of SMM50 in paraffin-embedded mouse heart tissue using SMM50 Rabbit mAb (A9355) at a dilution of 1:400 (40x lens). High pressure antigen retrieval was performed with 0.01 M citrate buffer (pH 6.0) prior to IHC staining.



Immunohistochemistry analysis of SMM50 in paraffin-embedded rat kidney tissue using SMM50 Rabbit mAb (A9355) at a dilution of 1:400 (40x lens). High pressure antigen retrieval was performed with 0.01 M citrate buffer (pH 6.0) prior to IHC staining.