

PPM1E Rabbit mAb

Catalog No.: A9374 **Recombinant**

Basic Information

Observed MW

100kDa

Calculated MW

84kDa

Category

Primary antibody

Applications

ELISA, WB

Cross-Reactivity

Human

CloneNo number

ARC2763

Background

This gene encodes a member of the PPM family of serine/threonine-protein phosphatases. The encoded protein is localized to the nucleus and dephosphorylates and inactivates multiple substrates including serine/threonine-protein kinase PAK 1, 5'-AMP-activated protein kinase (AMPK) and the multifunctional calcium/calmodulin-dependent protein kinases. Alternatively spliced transcript variants have been observed for this gene.

Recommended Dilutions

WB 1:500 - 1:1000

Immunogen Information

Gene ID

22843

Swiss Prot

Q8WY54

Immunogen

A synthetic peptide corresponding to a sequence within amino acids 500-600 of human PPM1E (Q8WY54).

Synonyms

POPX1; PP2CH; caMKN; CAMKPN; CaMKP-N; PPM1E

Contact

☎ | 400-999-6126

✉ | cn.market@abclonal.com.cn

🌐 | www.abclonal.com.cn

Product Information

Source

Rabbit

Isotype

IgG

Purification

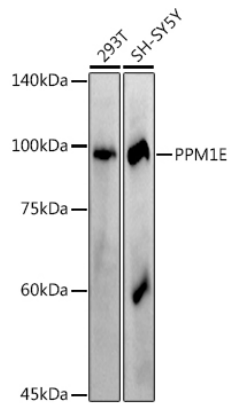
Affinity purification

Storage

Store at -20°C. Avoid freeze / thaw cycles.

Buffer: PBS with 0.02% sodium azide, 0.05% BSA, 50% glycerol, pH7.3.

Validation Data



Western blot analysis of extracts of various cell lines, using (A9374) at 1:1000 dilution.
Secondary antibody: HRP Goat Anti-Rabbit IgG (H+L) (AS014) at 1:10000 dilution.
Lysates/proteins: 25µg per lane.
Blocking buffer: 3% nonfat dry milk in TBST.
Detection: ECL Basic Kit (RM00020).
Exposure time: 180s.