

# SR protein repeat Rabbit mAb

Catalog No.: A9377 **Recombinant**

## Basic Information

### Observed MW

55kDa/

### Calculated MW

40kDa

### Category

Primary antibody

### Applications

ELISA, WB, IHC-P, IP

### Cross-Reactivity

Human, Mouse, Rat

### CloneNo number

ARC2754

## Background

The protein encoded by this gene is involved in mRNA splicing and may play a role in the determination of alternative splicing. The encoded nuclear protein belongs to the splicing factor SR family and has been shown to bind with and modulate another member of the family, SFRS12. Alternative splicing results in multiple transcript variants. In addition, two pseudogenes, one on chromosome 17 and the other on the X chromosome, have been found for this gene.

## Recommended Dilutions

**WB** 1:100 - 1:500

**IHC-P** 1:50 - 1:200

**IP** 0.5µg-4µg antibody for  
300µg-600µg extracts of  
whole cells

## Immunogen Information

### Gene ID

6431

### Swiss Prot

Q13247

### Immunogen

A synthetic peptide corresponding to a sequence within amino acids 100-200 of human SR protein repeat (Q13247).

### Synonyms

B52; SFRS6; SRP55; HEL-S-91; SR protein repeat

## Contact

☎ | 400-999-6126

✉ | [cn.market@abclonal.com.cn](mailto:cn.market@abclonal.com.cn)

🌐 | [www.abclonal.com.cn](http://www.abclonal.com.cn)

## Product Information

### Source

Rabbit

### Isotype

IgG

### Purification

Affinity purification

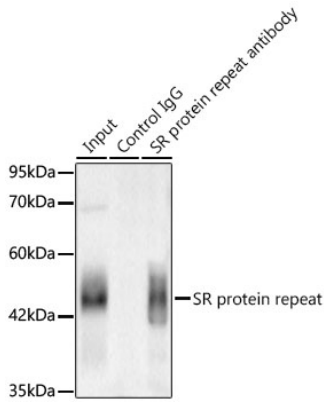
### Storage

Store at -20°C. Avoid freeze / thaw cycles.

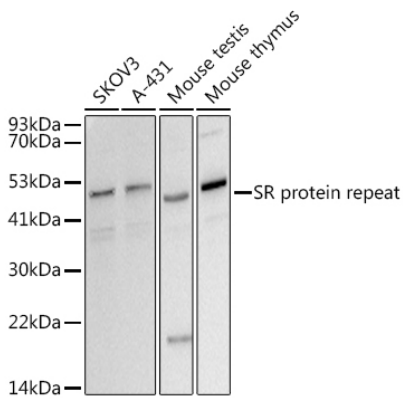
Buffer: PBS with 0.02% sodium azide, 0.05% BSA, 50% glycerol, pH7.3.

## Validation Data

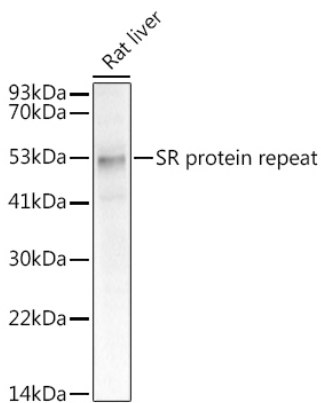
Immunoprecipitation of SR protein repeat in 600 µg extracts from Mouse thymus using 3 µg SR protein repeat Rabbit mAb (A9377). Western blot analysis was performed using SR protein repeat Rabbit mAb (A9377) at 1:500 dilution.



Western blot analysis of various lysates using (A9377) at 1:500 dilution. Secondary antibody: HRP Goat Anti-Rabbit IgG (H+L) (AS014) at 1:10000 dilution. Lysates/proteins: 25µg per lane. Blocking buffer: 3% nonfat dry milk in TBST. Detection: ECL Basic Kit (RM00020). Exposure time: 30s.

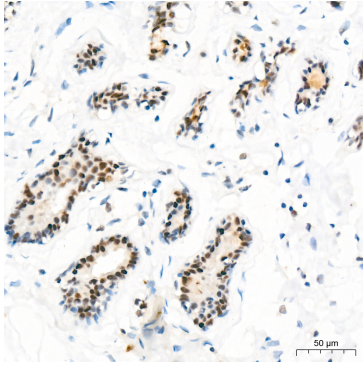


Western blot analysis of lysates from Rat liver, using (A9377) at 1:500 dilution. Secondary antibody: HRP Goat Anti-Rabbit IgG (H+L) (AS014) at 1:10000 dilution. Lysates/proteins: 25µg per lane. Blocking buffer: 3% nonfat dry milk in TBST. Detection: ECL Enhanced Kit (RM00021). Exposure time: 30s.

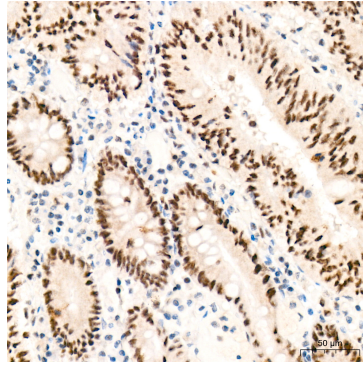


## Validation Data

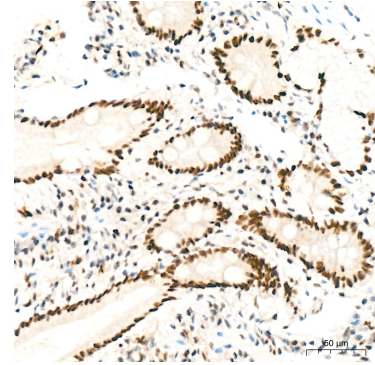
---



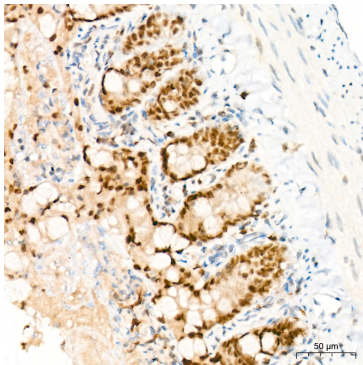
Immunohistochemistry analysis of SR protein repeat in paraffin-embedded human breast tissue using SR protein repeat Rabbit mAb (A9377) at a dilution of 1:200 (40x lens). High pressure antigen retrieval was performed with 0.01 M Tris-EDTA buffer (pH 9.0) prior to IHC staining.



Immunohistochemistry analysis of SR protein repeat in paraffin-embedded human colon carcinoma tissue using SR protein repeat Rabbit mAb (A9377) at a dilution of 1:200 (40x lens). High pressure antigen retrieval was performed with 0.01 M Tris-EDTA buffer (pH 9.0) prior to IHC staining.



Immunohistochemistry analysis of SR protein repeat in paraffin-embedded human colon tissue using SR protein repeat Rabbit mAb (A9377) at a dilution of 1:200 (40x lens). High pressure antigen retrieval was performed with 0.01 M Tris-EDTA buffer (pH 9.0) prior to IHC staining.



Immunohistochemistry analysis of SR protein repeat in paraffin-embedded rat colon tissue using SR protein repeat Rabbit mAb (A9377) at a dilution of 1:200 (40x lens). High pressure antigen retrieval was performed with 0.01 M Tris-EDTA buffer (pH 9.0) prior to IHC staining.