

# CCDC98 Rabbit mAb

Catalog No.: A9421 **Recombinant**

## Basic Information

### Observed MW

50kDa

### Calculated MW

47kDa

### Category

Primary antibody

### Applications

WB,IP,(ELISA)

### Cross-Reactivity

Human

### CloneNo number

ARC2760

## Background

This gene encodes a protein that binds to the C-terminal repeats of breast cancer 1 (BRCA1) through a phospho-SXXF motif. The encoded protein recruits ubiquitin interaction motif containing 1 protein to BRCA1 protein and is required for DNA damage resistance, DNA repair, and cell cycle checkpoint control. Pseudogenes of this gene are found on chromosomes 3 and 8. Alternative splicing results in multiple transcript variants.

## Recommended Dilutions

**WB** 1:500 - 1:1000

**IP** 0.5µg-4µg antibody for  
200µg-400µg extracts of  
whole cells

**ELISA** Recommended starting  
concentration is 1 µg/mL.  
Please optimize the  
concentration based on  
your specific assay  
requirements.

## Immunogen Information

### Gene ID

84142

### Swiss Prot

Q6UWZ7

### Immunogen

A synthetic peptide corresponding to a sequence within amino acids 310-409 of human CCDC98 (Q6UWZ7).

### Synonyms

ABRA1; CCDC98; FAM175A

## Contact

☎ | 400-999-6126

✉ | [cn.market@abclonal.com.cn](mailto:cn.market@abclonal.com.cn)

🌐 | [www.abclonal.com.cn](http://www.abclonal.com.cn)

## Product Information

### Source

Rabbit

### Isotype

IgG

### Purification

Affinity purification

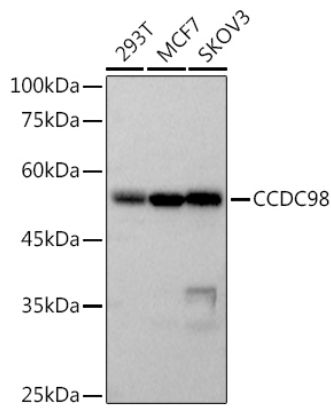
### Storage

Store at -20°C. Avoid freeze / thaw cycles.

Buffer: PBS with 0.02% sodium azide,0.05% BSA,50% glycerol,pH7.3.

## Validation Data

---



Western blot analysis of various lysates, using CCDC98 Rabbit mAb (A9421) at 1:500 dilution. Secondary antibody: HRP-conjugated Goat anti-Rabbit IgG (H+L) (AS014) at 1:10000 dilution. Lysates/proteins: 25 $\mu$ g per lane. Blocking buffer: 3% nonfat dry milk in TBST. Detection: ECL Basic Kit (RM00020). Exposure time: 3s.