

PCBD1 Rabbit mAb

Catalog No.: A9426 **Recombinant**

Basic Information

Observed MW

12kDa

Calculated MW

12kDa

Category

Primary antibody

Applications

ELISA, WB, IHC-P

Cross-Reactivity

Human, Mouse, Rat

CloneNo number

ARC2749

Background

This gene encodes a member of the pterin-4-alpha-carbinolamine dehydratase family. The encoded protein has been identified as a moonlighting protein based on its ability to perform mechanistically distinct functions. The encoded protein functions as both a dehydratase involved in tetrahydrobiopterin biosynthesis, and as a cofactor for HNF1A-dependent transcription. A deficiency of this enzyme leads to hyperphenylalaninemia. Alternative splicing results in multiple transcript variants.

Recommended Dilutions

WB 1:500 - 1:1000

IHC-P 1:50 - 1:200

Immunogen Information

Gene ID

5092

Swiss Prot

P61457

Immunogen

A synthetic peptide corresponding to a sequence within amino acids 1-104 of human PCBD1 (P61457).

Synonyms

PCD; PHS; DCOH; PCBD; PCBD1

Contact

☎ | 400-999-6126

✉ | cn.market@abclonal.com.cn

🌐 | www.abclonal.com.cn

Product Information

Source

Rabbit

Isotype

IgG

Purification

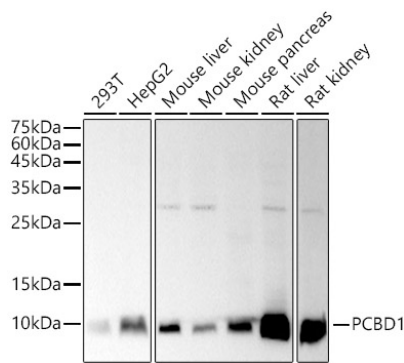
Affinity purification

Storage

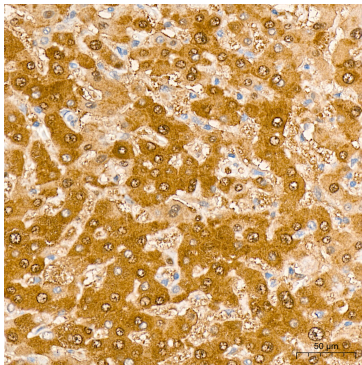
Store at -20°C. Avoid freeze / thaw cycles.

Buffer: PBS with 0.02% sodium azide, 0.05% BSA, 50% glycerol, pH7.3.

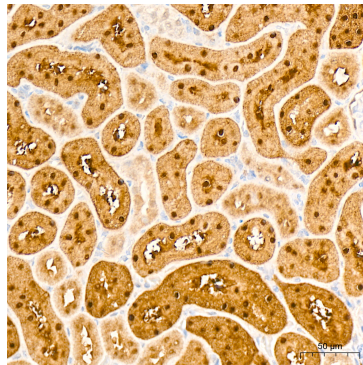
Validation Data



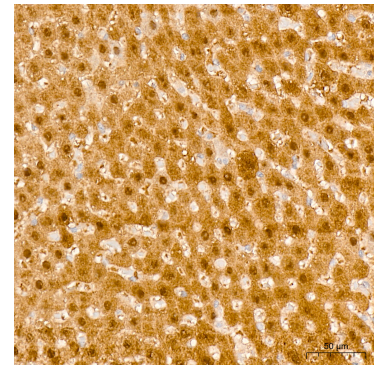
Western blot analysis of various lysates, using (A9426) at 1:1000 dilution. Secondary antibody: HRP Goat Anti-Rabbit IgG (H+L) (AS014) at 1:10000 dilution. Lysates/proteins: 25µg per lane. Blocking buffer: 3% nonfat dry milk in TBST. Detection: ECL Basic Kit (RM00020). Exposure time: 30s.



Immunohistochemistry analysis of PCBD1 in paraffin-embedded human liver tissue using PCBD1 Rabbit mAb (A9426) at a dilution of 1:200 (40x lens). High pressure antigen retrieval was performed with 0.01 M citrate buffer (pH 6.0) prior to IHC staining.



Immunohistochemistry analysis of PCBD1 in paraffin-embedded rat kidney tissue using PCBD1 Rabbit mAb (A9426) at a dilution of 1:200 (40x lens). High pressure antigen retrieval was performed with 0.01 M citrate buffer (pH 6.0) prior to IHC staining.



Immunohistochemistry analysis of PCBD1 in paraffin-embedded rat liver tissue using PCBD1 Rabbit mAb (A9426) at a dilution of 1:200 (40x lens). High pressure antigen retrieval was performed with 0.01 M citrate buffer (pH 6.0) prior to IHC staining.