

# IL1 $\beta$ Rabbit mAb

Catalog No.: A9440

Recombinant

1 Publications

## Basic Information

### Observed MW

19kDa/31kDa

### Calculated MW

31kDa

### Category

Primary antibody

### Applications

WB,ELISA

### Cross-Reactivity

Mouse

### CloneNo number

ARC2727

## Background

The protein encoded by this gene is a member of the interleukin 1 cytokine family. This cytokine is produced by activated macrophages as a proprotein, which is proteolytically processed to its active form by caspase 1. The encoded protein plays a role in thymocyte proliferation and is involved in the inflammatory response.

## Recommended Dilutions

**WB** 1:500 - 1:1000

**ELISA** Recommended starting concentration is 1  $\mu$ g/mL. Please optimize the concentration based on your specific assay requirements.

## Immunogen Information

### Gene ID

16176

### Swiss Prot

P10749

### Immunogen

Recombinant fusion protein containing a sequence corresponding to amino acids 100-269 of mouse IL1 $\beta$  (P10749).

### Synonyms

IL-1b; IL-1beta; IL1 $\beta$

## Contact

☎ | 400-999-6126

✉ | [cn.market@abclonal.com.cn](mailto:cn.market@abclonal.com.cn)

🌐 | [www.abclonal.com.cn](http://www.abclonal.com.cn)

## Product Information

### Source

Rabbit

### Isotype

IgG

### Purification

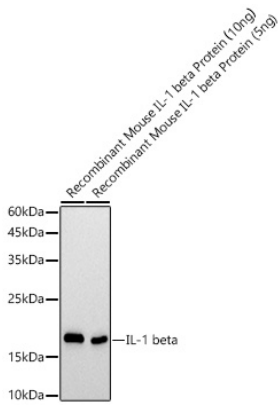
Affinity purification

### Storage

Store at -20°C. Avoid freeze / thaw cycles.

Buffer: PBS with 0.02% sodium azide,0.05% BSA,50% glycerol,pH7.3.

## Validation Data



Western blot analysis of recombinant Mouse IL1 $\beta$  Protein, using IL1 $\beta$  Rabbit mAb (A9440) at 1:1000 dilution.

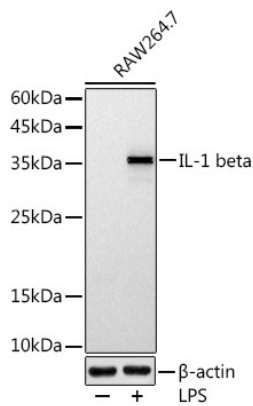
Secondary antibody: HRP-conjugated Goat anti-Rabbit IgG (H+L) (AS014) at 1:10000 dilution.

Lysates/proteins: 10ng/5ng per lane.

Blocking buffer: 3% nonfat dry milk in TBST.

Detection: ECL Basic Kit (RM00020).

Exposure time: 1s.



Western blot analysis of lysates from RAW264.7 cells, using IL1 $\beta$  Rabbit mAb (A9440) at 1:1000 dilution. Raw264.7 cells were treated by LPS (1  $\mu$ g/ml) at 37 $^{\circ}$ C for 8 hours.

Secondary antibody: HRP-conjugated Goat anti-Rabbit IgG (H+L) (AS014) at 1:10000 dilution.

Lysates/proteins: 25 $\mu$ g per lane.

Blocking buffer: 3% nonfat dry milk in TBST.

Detection: ECL Basic Kit (RM00020).

Exposure time: 180s.