

DEPDC6 Rabbit pAb

Catalog No.: A9447 **2 Publications**

Basic Information

Observed MW

48kDa

Calculated MW

46kDa

Category

Primary antibody

Applications

ELISA, WB

Cross-Reactivity

Human, Mouse

Background

Involved in several processes, including negative regulation of TOR signaling; negative regulation of cell size; and negative regulation of protein kinase activity.

Recommended Dilutions

WB 1:500 - 1:2000

Immunogen Information

Gene ID

64798

Swiss Prot

Q8TB45

Immunogen

Recombinant fusion protein containing a sequence corresponding to amino acids 1-217 of human DEPDC6 (NP_073620.2).

Synonyms

DEP.6; DEPDC6

Contact

 | 400-999-6126

 | cn.market@abclonal.com.cn

 | www.abclonal.com.cn

Product Information

Source

Rabbit

Isotype

IgG

Purification

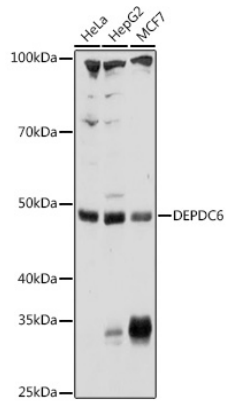
Affinity purification

Storage

Store at -20°C. Avoid freeze / thaw cycles.

Buffer: PBS with 0.01% thimerosal, 50% glycerol, pH7.3.

Validation Data



Western blot analysis of various lysates using DEPDC6 Rabbit pAb (A9447) at 1:1000 dilution.
Secondary antibody: HRP Goat Anti-Rabbit IgG (H+L) (AS014) at 1:10000 dilution.
Lysates/proteins: 25µg per lane.
Blocking buffer: 3% nonfat dry milk in TBST.
Detection: ECL Basic Kit (RM00020).
Exposure time: 60s.