

# DCAMKL1/DCLK1 Rabbit pAb

Catalog No.: A9474

## Basic Information

### Observed MW

82kDa

### Calculated MW

82kDa

### Category

Primary antibody

### Applications

ELISA,WB,IF/ICC

### Cross-Reactivity

Human, Mouse, Rat

## Background

This gene encodes a member of the protein kinase superfamily and the doublecortin family. The protein encoded by this gene contains two N-terminal doublecortin domains, which bind microtubules and regulate microtubule polymerization, a C-terminal serine/threonine protein kinase domain, which shows substantial homology to Ca<sup>2+</sup>/calmodulin-dependent protein kinase, and a serine/proline-rich domain in between the doublecortin and the protein kinase domains, which mediates multiple protein-protein interactions. The microtubule-polymerizing activity of the encoded protein is independent of its protein kinase activity. The encoded protein is involved in several different cellular processes, including neuronal migration, retrograde transport, neuronal apoptosis and neurogenesis. This gene is up-regulated by brain-derived neurotrophic factor and associated with memory and general cognitive abilities. Multiple transcript variants generated by two alternative promoter usage and alternative splicing have been reported, but the full-length nature and biological validity of some variants have not been defined. These variants encode different isoforms, which are differentially expressed and have different kinase activities.

## Recommended Dilutions

WB	1:500 - 1:1000
IF/ICC	1:50 - 1:200

## Immunogen Information

### Gene ID

9201

### Swiss Prot

O15075

### Immunogen

Recombinant fusion protein containing a sequence corresponding to amino acids 590-740 of DCAMKL1/DCLK1 (NP\_001317000.1).

### Synonyms

CL1; DCLK; CLICK1; DCDC3A; DCAMKL1; DCAMKL1/DCLK1

## Contact

☎ | 400-999-6126

✉ | [cn.market@abclonal.com.cn](mailto:cn.market@abclonal.com.cn)

🌐 | [www.abclonal.com.cn](http://www.abclonal.com.cn)

## Product Information

### Source

Rabbit

### Isotype

IgG

### Purification

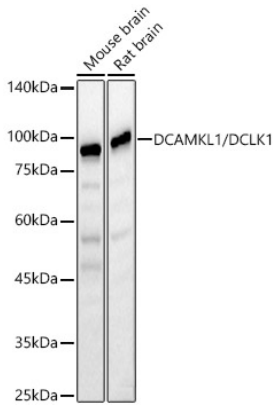
Affinity purification

### Storage

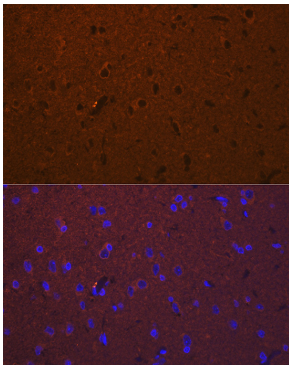
Store at -20°C. Avoid freeze / thaw cycles.

Buffer: PBS with 0.01% thimerosal, 50% glycerol, pH 7.3.

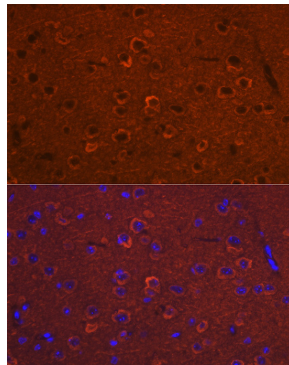
## Validation Data



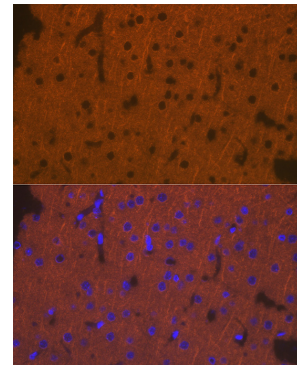
Western blot analysis of various lysates, using DCAMKL1/DCLK1 antibody (A9474) at 1:800 dilution. Secondary antibody: HRP Goat Anti-Rabbit IgG (H+L) (AS014) at 1:10000 dilution. Lysates/proteins: 25µg per lane. Blocking buffer: 3% nonfat dry milk in TBST. Detection: ECL Basic Kit (RM00020). Exposure time: 60s.



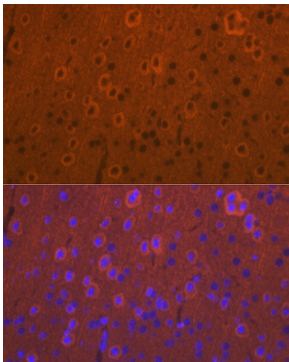
Immunofluorescence analysis of Rat brain using DCAMKL1/DCLK1 antibody (A9474) at dilution of 1:100 (40x lens). Blue: DAPI for nuclear staining.



Immunofluorescence analysis of Mouse brain using DCAMKL1/DCLK1 antibody (A9474) at dilution of 1:100 (40x lens). Blue: DAPI for nuclear staining.



Immunofluorescence analysis of rat brain cells using DCAMKL1/DCLK1 Rabbit pAb (A9474) at dilution of 1:100 (40x lens). Blue: DAPI for nuclear staining.



Immunofluorescence analysis of mouse brain cells using DCAMKL1/DCLK1 Rabbit pAb (A9474) at dilution of 1:100 (40x lens). Blue: DAPI for nuclear staining.