

# IMPDH1 Rabbit pAb

**Catalog No.: A9497**

## Basic Information

### Observed MW

55kDa

### Calculated MW

55kDa

### Category

Primary antibody

### Applications

ELISA, WB, IF/ICC

### Cross-Reactivity

Human, Mouse, Rat

## Background

The protein encoded by this gene acts as a homotetramer to regulate cell growth. The encoded protein is an enzyme that catalyzes the synthesis of xanthine monophosphate (XMP) from inosine-5'-monophosphate (IMP). This is the rate-limiting step in the de novo synthesis of guanine nucleotides. Defects in this gene are a cause of retinitis pigmentosa type 10 (RP10). Several transcript variants encoding different isoforms have been found for this gene.

## Recommended Dilutions

**WB** 1:1000 - 1:2000

**IF/ICC** 1:50 - 1:200

## Immunogen Information

### Gene ID

3614

### Swiss Prot

P20839

### Immunogen

Recombinant fusion protein containing a sequence corresponding to amino acids 434-563 of human IMPDH1 (NP\_899066.1).

### Synonyms

IMPD; RP10; IMPD1; LCA11; IMPDH-I; sWSS2608; IMPDH1

## Contact

☎ | 400-999-6126

✉ | [cn.market@abclonal.com.cn](mailto:cn.market@abclonal.com.cn)

🌐 | [www.abclonal.com.cn](http://www.abclonal.com.cn)

## Product Information

### Source

Rabbit

### Isotype

IgG

### Purification

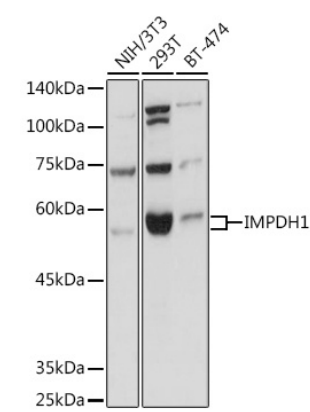
Affinity purification

### Storage

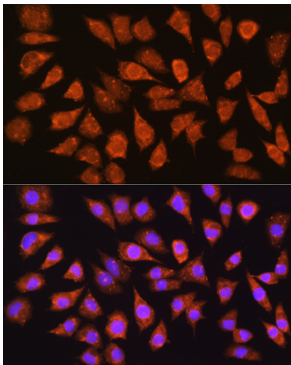
Store at -20°C. Avoid freeze / thaw cycles.

Buffer: PBS with 0.02% sodium azide, 50% glycerol, pH7.3.

# Validation Data



Western blot analysis of extracts of various cell lines, using IMPDH1 Rabbit pAb (A9497) at 1:1000 dilution.  
Secondary antibody: HRP Goat Anti-Rabbit IgG (H+L) (AS014) at 1:10000 dilution.  
Lysates/proteins: 25µg per lane.  
Blocking buffer: 3% nonfat dry milk in TBST.  
Detection: ECL Basic Kit (RM00020).  
Exposure time: 1s.



Immunofluorescence analysis of L929 cells using IMPDH1 Rabbit pAb (A9497) at dilution of 1:100 (40x lens). Blue: DAPI for nuclear staining.