

MYH6/ α -MHC Rabbit pAb

Catalog No.: A9516 **4 Publications**

Basic Information

Observed MW

255kDa

Calculated MW

224kDa

Category

Primary antibody

Applications

ELISA, WB, IF/ICC

Cross-Reactivity

Mouse, Rat

Background

Cardiac muscle myosin is a hexamer consisting of two heavy chain subunits, two light chain subunits, and two regulatory subunits. This gene encodes the alpha heavy chain subunit of cardiac myosin. The gene is located approximately 4kb downstream of the gene encoding the beta heavy chain subunit of cardiac myosin. Mutations in this gene cause familial hypertrophic cardiomyopathy and atrial septal defect 3.

Recommended Dilutions

WB 1:500 - 1:2000

IF/ICC 1:50 - 1:200

Immunogen Information

Gene ID

4624

Swiss Prot

P13533

Immunogen

Recombinant fusion protein containing a sequence corresponding to amino acids 1-250 of human MYH6/ α -MHC (NP_002462.2).

Synonyms

ASD3; MYHC; SSS3; CMH14; MYHCA; CMD1EE; alpha-MHC; MYH6/ α -MHC

Contact

 | 400-999-6126

 | cn.market@abclonal.com.cn

 | www.abclonal.com.cn

Product Information

Source

Rabbit

Isotype

IgG

Purification

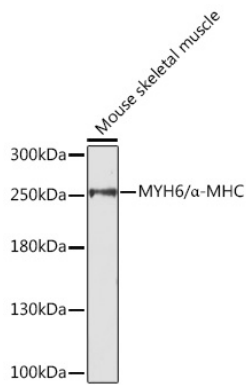
Affinity purification

Storage

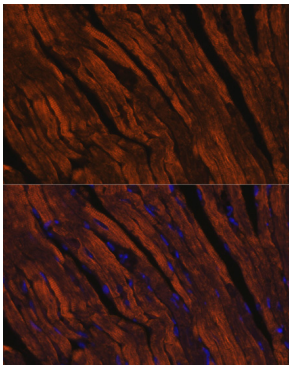
Store at -20°C. Avoid freeze / thaw cycles.

Buffer: PBS with 0.02% sodium azide, 50% glycerol, pH7.3.

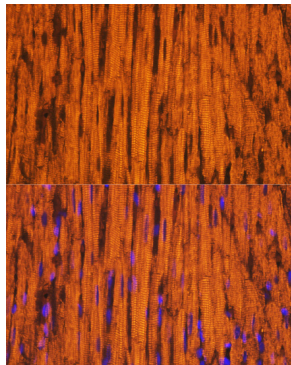
Validation Data



Western blot analysis of lysates from mouse skeletal muscle, using MYH6/α-MHC Rabbit pAb (A9516).
Secondary antibody: HRP Goat Anti-Rabbit IgG (H+L) (AS014) at 1:10000 dilution.
Lysates/proteins: 25μg per lane.
Blocking buffer: 3% nonfat dry milk in TBST.



Immunofluorescence analysis of mouse heart using MYH6/α-MHC Rabbit pAb (A9516) at dilution of 1:100. Blue: DAPI for nuclear staining.



Immunofluorescence analysis of rat heart using MYH6/α-MHC Rabbit pAb (A9516) at dilution of 1:100. Blue: DAPI for nuclear staining.