

# AHA1 Rabbit mAb

Catalog No.: A9538 **Recombinant**

## Basic Information

### Observed MW

42kDa

### Calculated MW

38kDa

### Category

Primary antibody

### Applications

ELISA, WB

### Cross-Reactivity

Human, Mouse, Rat

### CloneNo number

ARC1623

## Background

Enables ATPase activator activity; Hsp90 protein binding activity; and chaperone binding activity. Involved in positive regulation of ATPase activity. Located in cytosol.

## Recommended Dilutions

WB 1:500 - 1:2000

## Immunogen Information

### Gene ID

10598

### Swiss Prot

O95433

### Immunogen

A synthetic peptide corresponding to a sequence within amino acids 239-338 of human AHA1 (O95433).

### Synonyms

p38; AHA1; hAha1; C14orf3

## Contact

☎ | 400-999-6126

✉ | [cn.market@abclonal.com.cn](mailto:cn.market@abclonal.com.cn)

🌐 | [www.abclonal.com.cn](http://www.abclonal.com.cn)

## Product Information

### Source

Rabbit

### Isotype

IgG

### Purification

Affinity purification

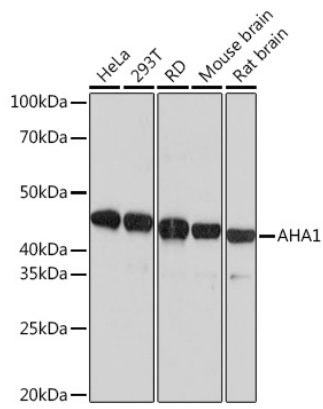
### Storage

Store at -20°C. Avoid freeze / thaw cycles.

Buffer: PBS with 0.02% sodium azide, 0.05% BSA, 50% glycerol, pH7.3.

## Validation Data

---



Western blot analysis of extracts of various cell lines, using AHA1 Rabbit mAb (A9538) at 1:1000 dilution.  
Secondary antibody: HRP Goat Anti-Rabbit IgG (H+L) (AS014) at 1:10000 dilution.  
Lysates/proteins: 25µg per lane.  
Blocking buffer: 3% nonfat dry milk in TBST.  
Detection: ECL Basic Kit (RM00020).  
Exposure time: 1s.