

GABARAPL2 Rabbit mAb

Catalog No.: A9585 **Recombinant** **1 Publications**

Basic Information

Observed MW

16kDa

Calculated MW

14kDa

Category

Primary antibody

Applications

ELISA, WB

Cross-Reactivity

Human, Mouse, Rat

CloneNo number

ARC1648

Background

Enables ubiquitin protein ligase binding activity. Involved in negative regulation of proteasomal protein catabolic process and protein localization to endoplasmic reticulum. Located in Golgi membrane and autophagosome membrane.

Recommended Dilutions

WB 1:500 - 1:1000

Immunogen Information

Gene ID

11345

Swiss Prot

P60520

Immunogen

A synthetic peptide corresponding to a sequence within amino acids 38-117 of human GABARAPL2 (P60520).

Synonyms

ATG8; GEF2; ATG8C; GEF-2; GATE16; GATE-16; FLC3A; GABARAPL2

Contact

 | 400-999-6126

 | cn.market@abclonal.com.cn

 | www.abclonal.com.cn

Product Information

Source

Rabbit

Isotype

IgG

Purification

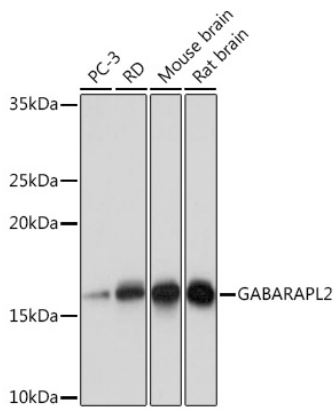
Affinity purification

Storage

Store at -20°C. Avoid freeze / thaw cycles.

Buffer: PBS with 0.02% sodium azide, 0.05% BSA, 50% glycerol, pH7.3.

Validation Data



Western blot analysis of extracts of various cell lines, using GABARAPL2 Rabbit mAb (A9585) at 1:1000 dilution.

Secondary antibody: HRP Goat Anti-Rabbit IgG (H+L) (AS014) at 1:10000 dilution.

Lysates/proteins: 25µg per lane.

Blocking buffer: 3% nonfat dry milk in TBST.

Detection: ECL Basic Kit (RM00020).

Exposure time: 10s.